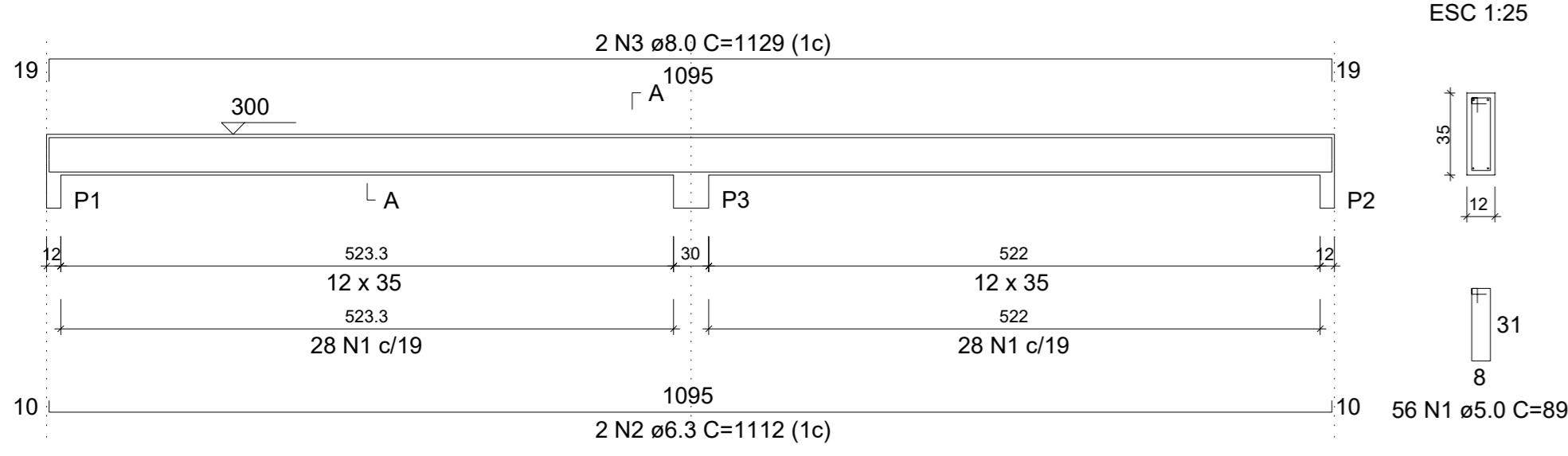
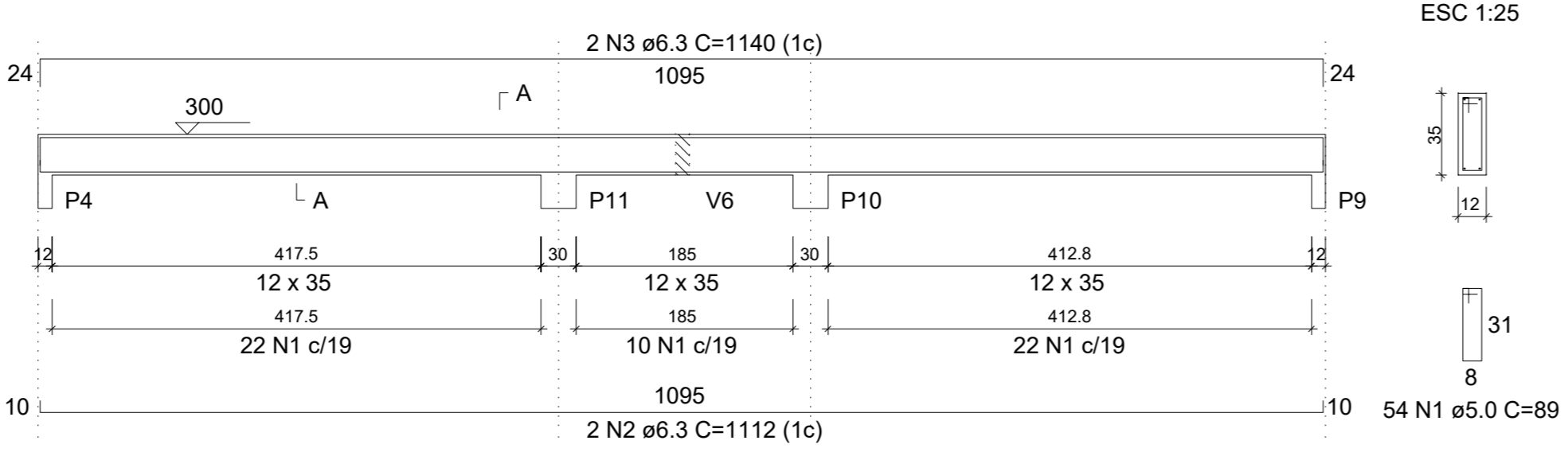


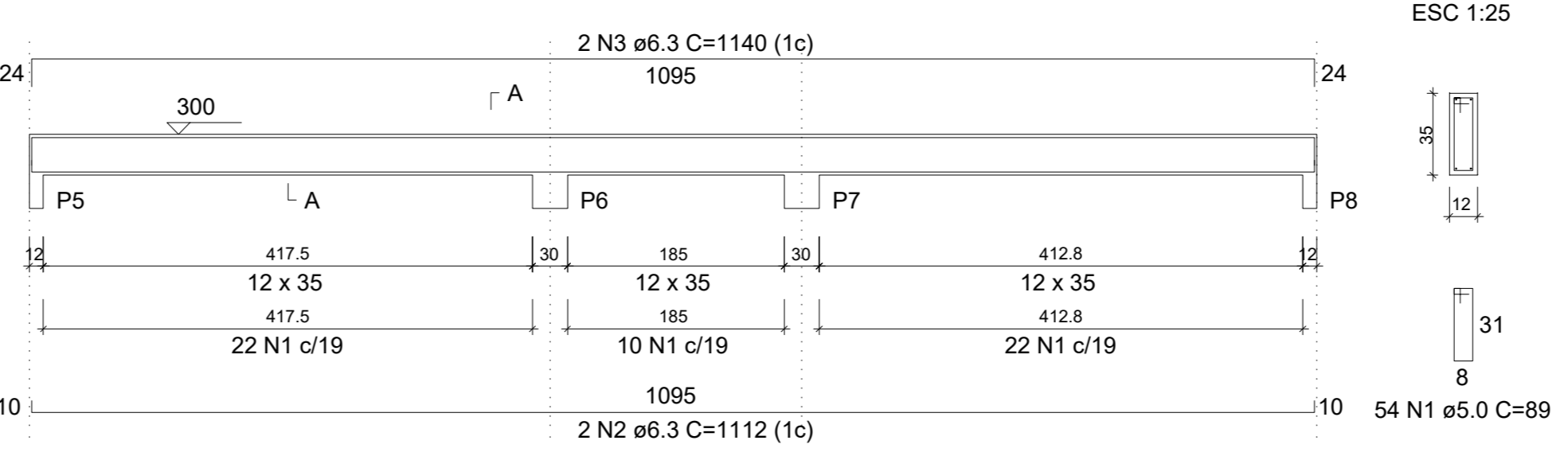
V1 (12 x 35)
ESC 1:50



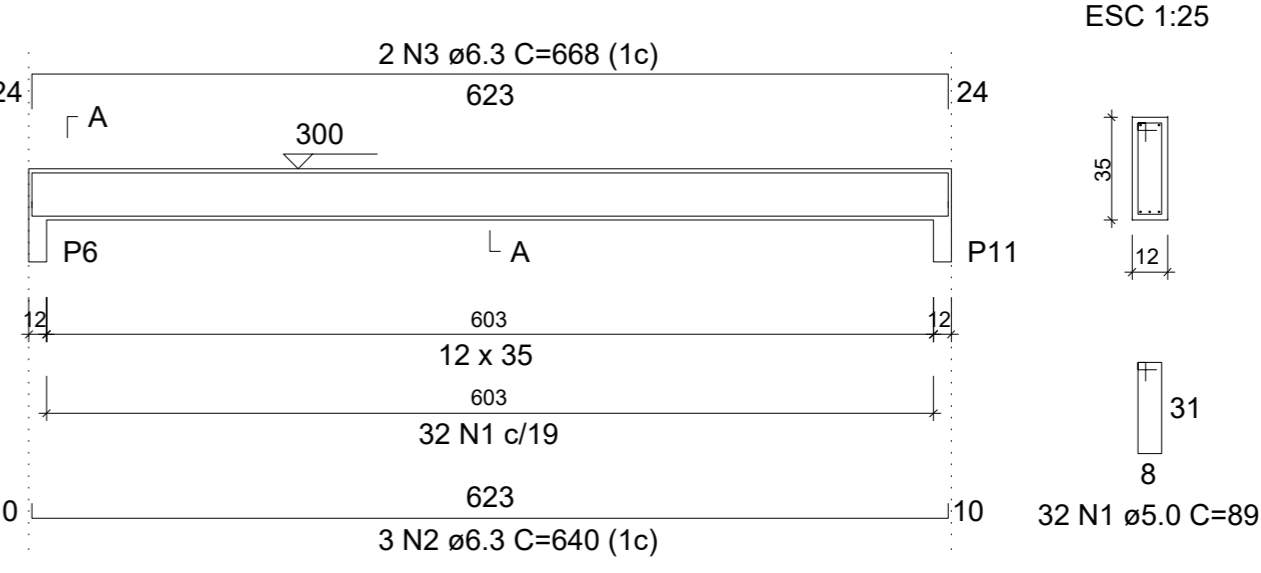
V2 (12 x 35)
ESC 1:50



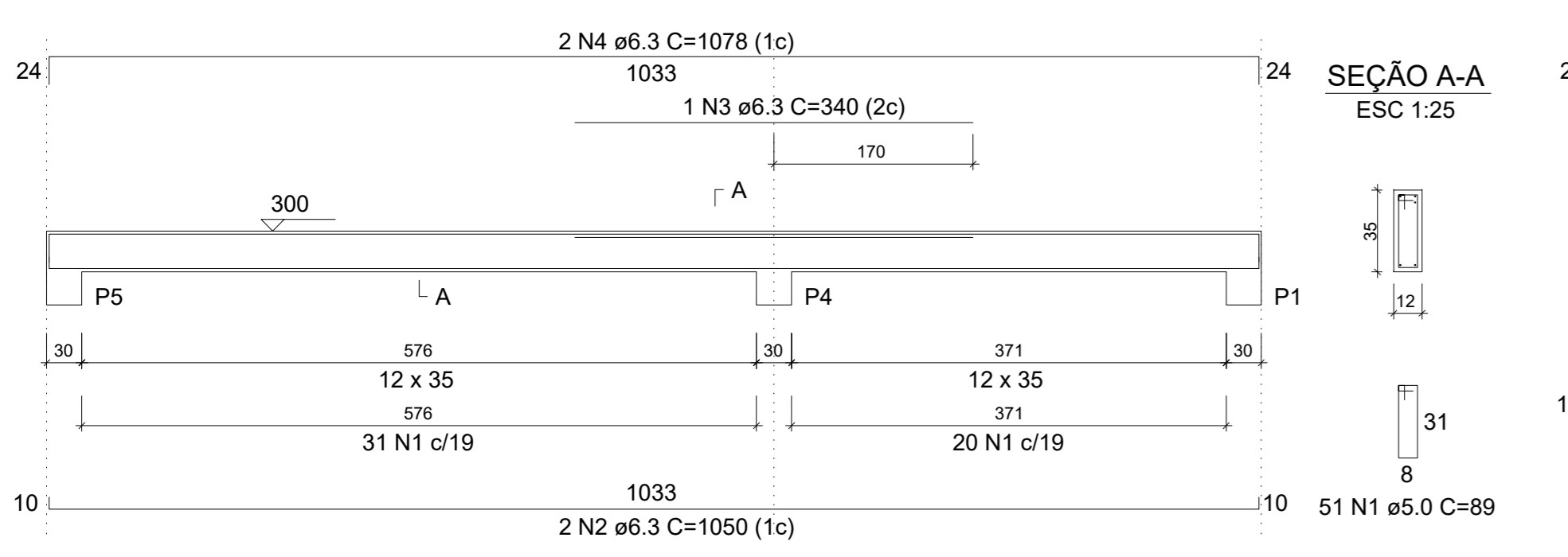
V3 (12 x 35)
ESC 1:50



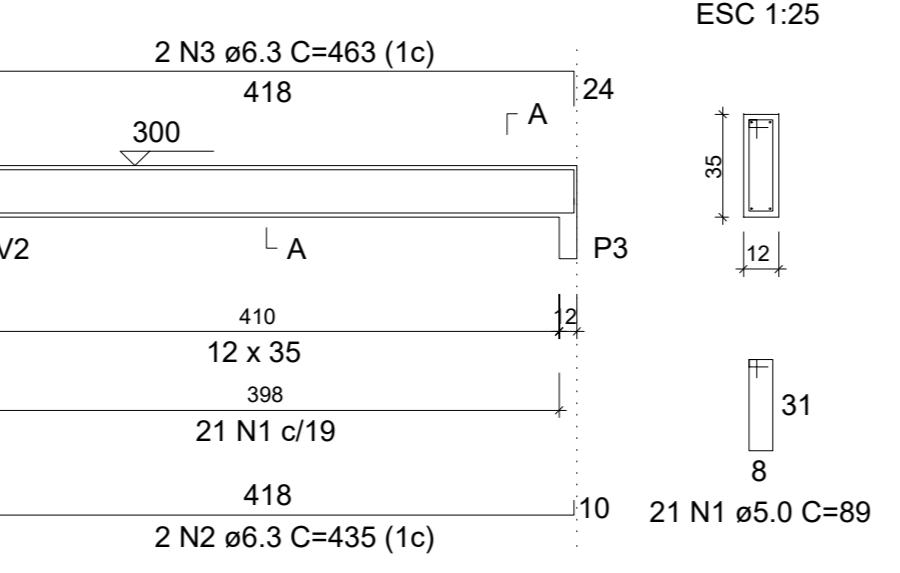
V5 (12 x 35)
ESC 1:50



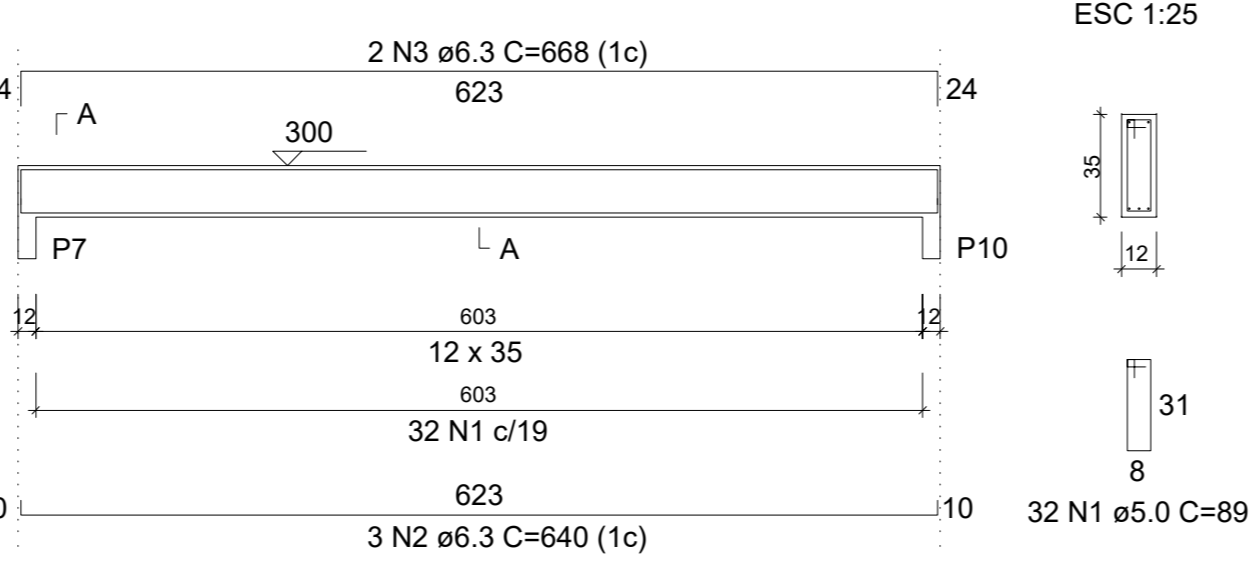
V4 (12 x 35)
ESC 1:50



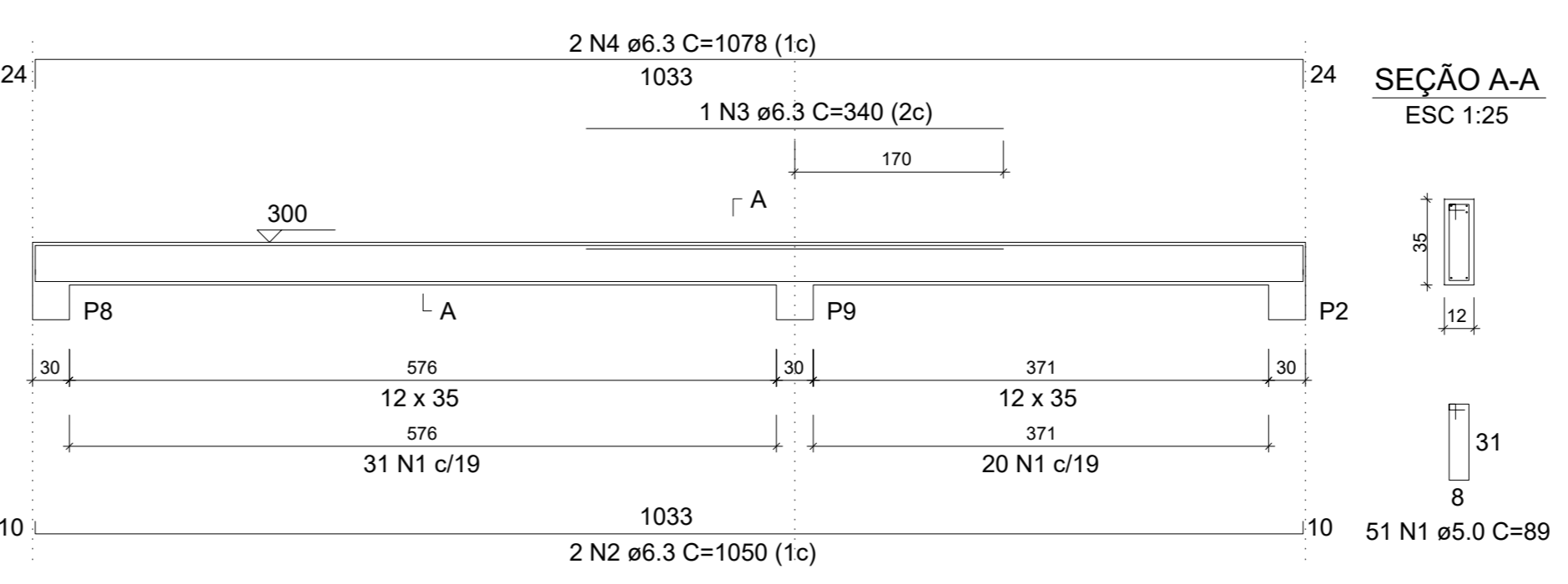
V6 (12 x 35)
ESC 1:50



V7 (12 x 35)
ESC 1:50



V8 (12 x 35)
ESC 1:50



RELAÇÃO DO AÇO

| ELEMENTO | AÇO N | DIAM (mm) | QUANT | C. UNIT (cm) | C. TOTAL (cm) | |
|----------|-------|-----------|-------|--------------|---------------|------|
| V1 | CA60 | 1 | 5,0 | 56 | 89 | 4984 |
| | CA50 | 2 | 6,3 | 2 | 112 | 2224 |
| | CA50 | 3 | 8,0 | 2 | 1129 | 2258 |
| V2 | CA60 | 1 | 5,0 | 54 | 89 | 4806 |
| | CA50 | 2 | 6,3 | 2 | 112 | 2224 |
| | CA50 | 3 | 6,3 | 2 | 1140 | 2280 |
| V3 | CA60 | 1 | 5,0 | 54 | 89 | 4806 |
| | CA50 | 2 | 6,3 | 2 | 112 | 2224 |
| | CA50 | 3 | 6,3 | 2 | 1140 | 2280 |
| V4 | CA60 | 1 | 5,0 | 51 | 89 | 4539 |
| | CA50 | 2 | 6,3 | 2 | 1050 | 2100 |
| | CA50 | 3 | 6,3 | 1 | 340 | 340 |
| V5 | CA60 | 1 | 5,0 | 32 | 89 | 2948 |
| | CA50 | 2 | 6,3 | 2 | 1078 | 2156 |
| | CA50 | 3 | 6,3 | 2 | 668 | 1336 |
| V6 | CA60 | 1 | 5,0 | 21 | 89 | 1869 |
| | CA50 | 2 | 6,3 | 2 | 435 | 870 |
| | CA50 | 3 | 6,3 | 2 | 463 | 926 |
| V7 | CA60 | 1 | 5,0 | 32 | 89 | 2848 |
| | CA50 | 2 | 6,3 | 3 | 640 | 1920 |
| | CA50 | 3 | 6,3 | 2 | 668 | 1336 |
| V8 | CA60 | 1 | 5,0 | 51 | 89 | 4539 |
| | CA50 | 2 | 6,3 | 2 | 1050 | 2100 |
| | CA50 | 3 | 6,3 | 1 | 340 | 340 |
| | CA50 | 4 | 6,3 | 2 | 1078 | 2156 |

RESUMO DO AÇO

| AÇO | DIAM (mm) | C.TOTAL (m) | QUANT + 0% (Barras) | PESO + 0% (kg) |
|-----------------|-----------|-------------|---------------------|----------------|
| CA50 | 6,3 | 287,3 | 24 | 70,3 |
| CA60 | 8,0 | 22,6 | 2 | 8,9 |
| CA50 | 5,0 | 312,4 | - | 48,2 |
| PESO TOTAL (kg) | | | | |
| CA50 | | | | 79,2 |
| CA60 | | | | 48,2 |

Volume de concreto (C-25) = 2,96 m³
Área de forma = 57,79 m²

| | | | | |
|---|-----------------------------|--------------|--------------|----------------------------------|
| MINISTÉRIO DA EDUCAÇÃO | ANO | TÍTULO | FOLHA | SECRETARIA MUNICIPAL DE EDUCAÇÃO |
| PCN | 2024 | EST. | 14 | |
| PROFESSORES DA EDUCAÇÃO INFANTIL | | | | |
| CONSTITUENTE | LOCAL | TIPO | MODIFICAÇÕES | |
| PREFEITURA MUNICIPAL DE MUCAMÁ | Vila da penha | Municipal RR | | |
| CAMPUS DE FUTEBOL | | | | |
| ESTRUTURAL | Projeto de Engenharia Civil | | | |
| Assinatura: Alexandre Rodrigues Melo | | | | |
| Assinatura: Eronides Aparecida Gonçalves | | | | |
| Assinatura: Eng. Alexandre Rodrigues Melo | | | | |