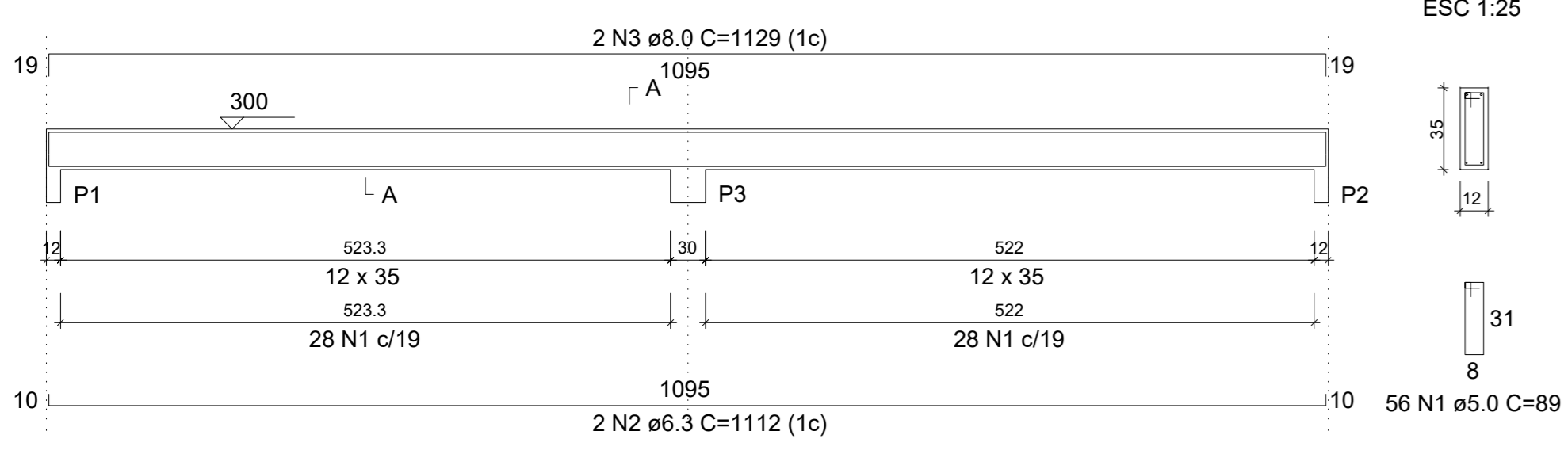
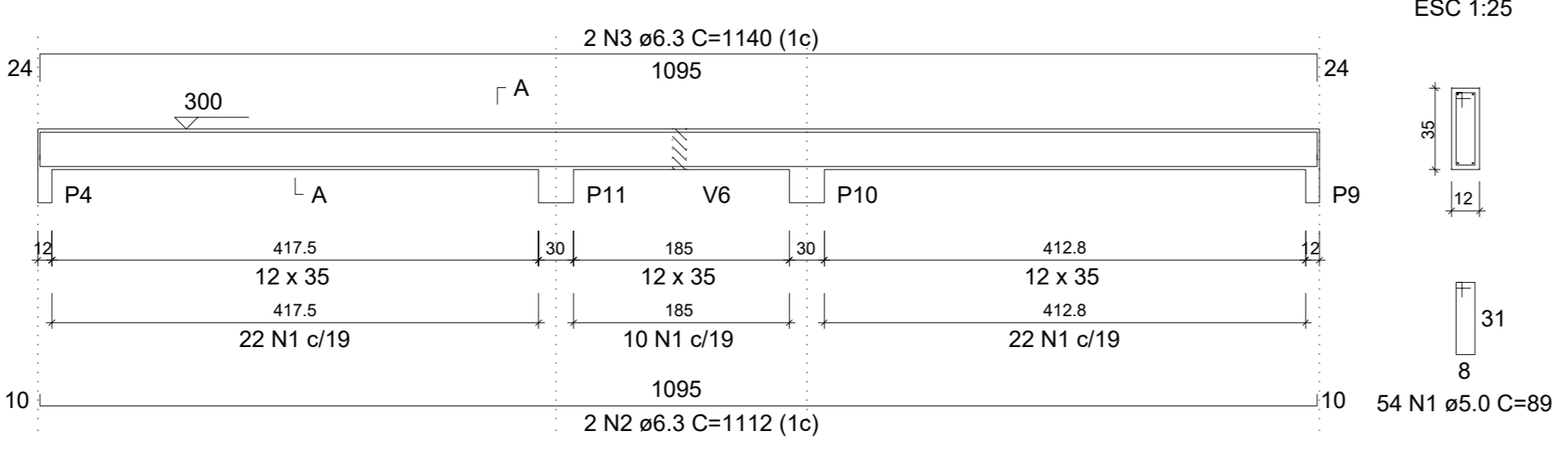


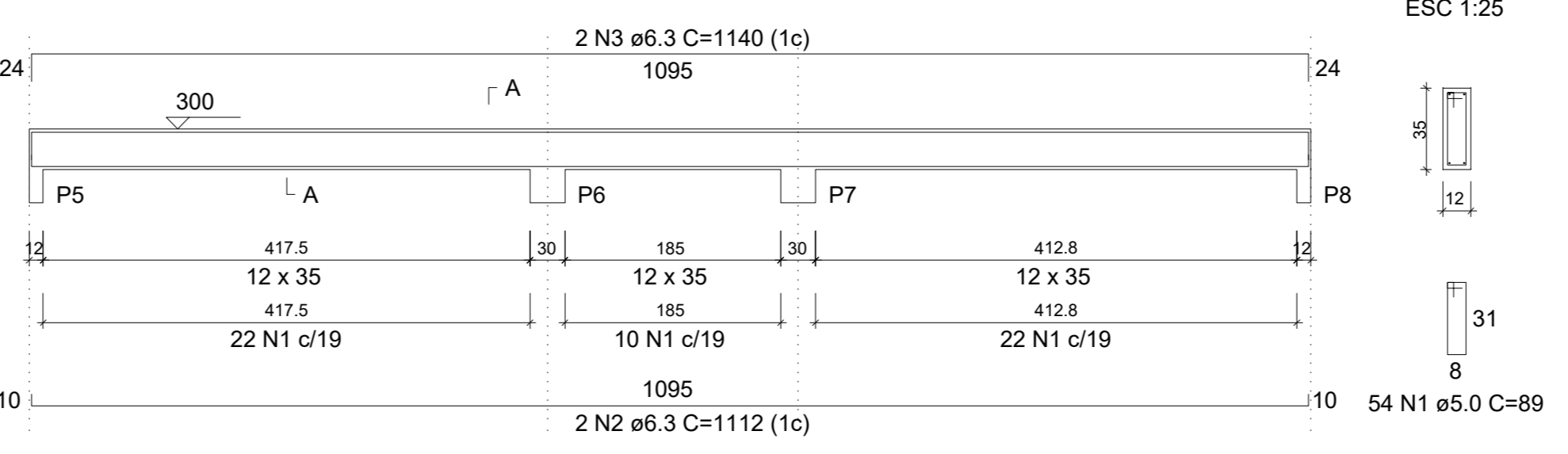
V1 (12 x 35)  
ESC 1:50



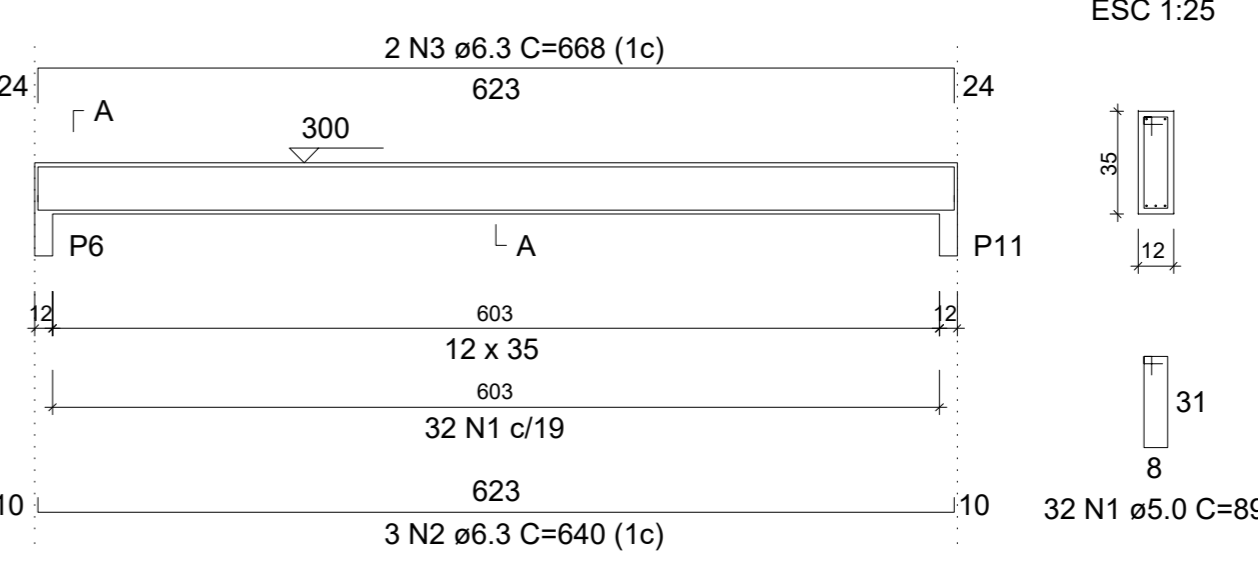
V2 (12 x 35)  
ESC 1:50



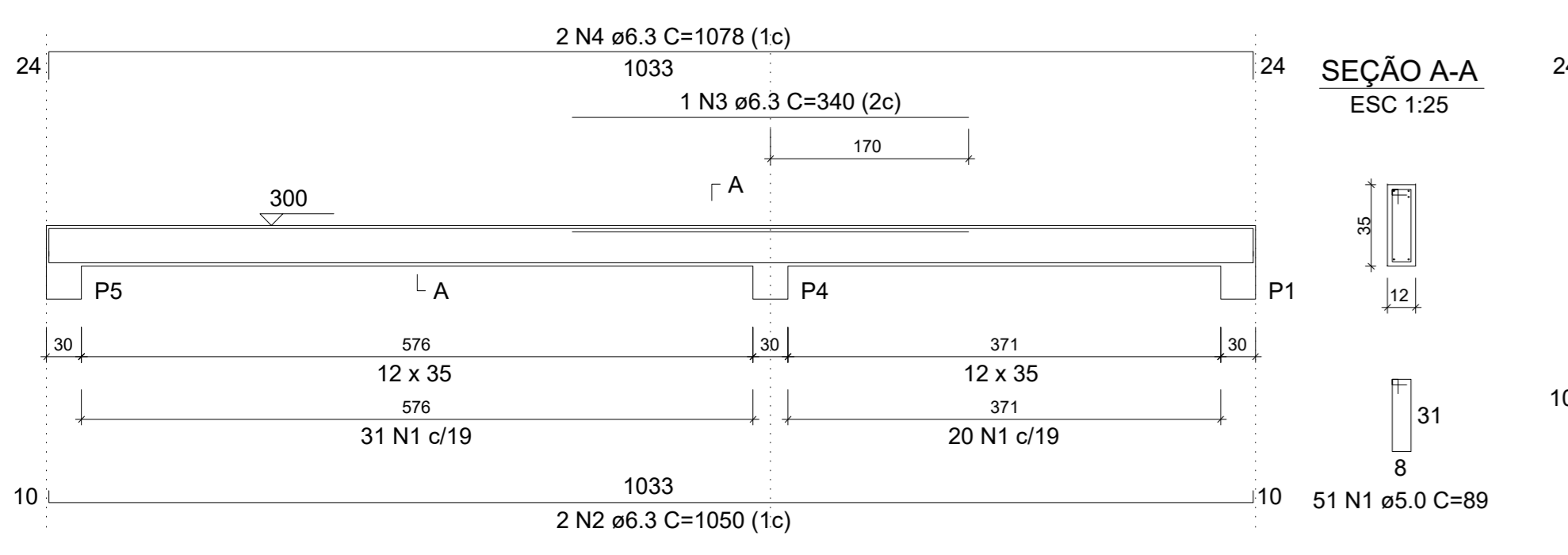
V3 (12 x 35)  
ESC 1:50



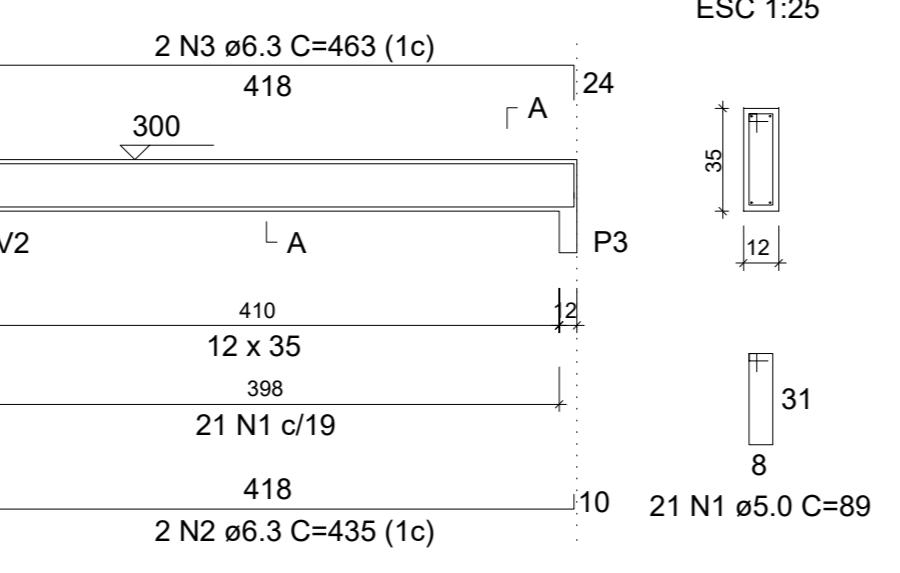
V5 (12 x 35)  
ESC 1:50



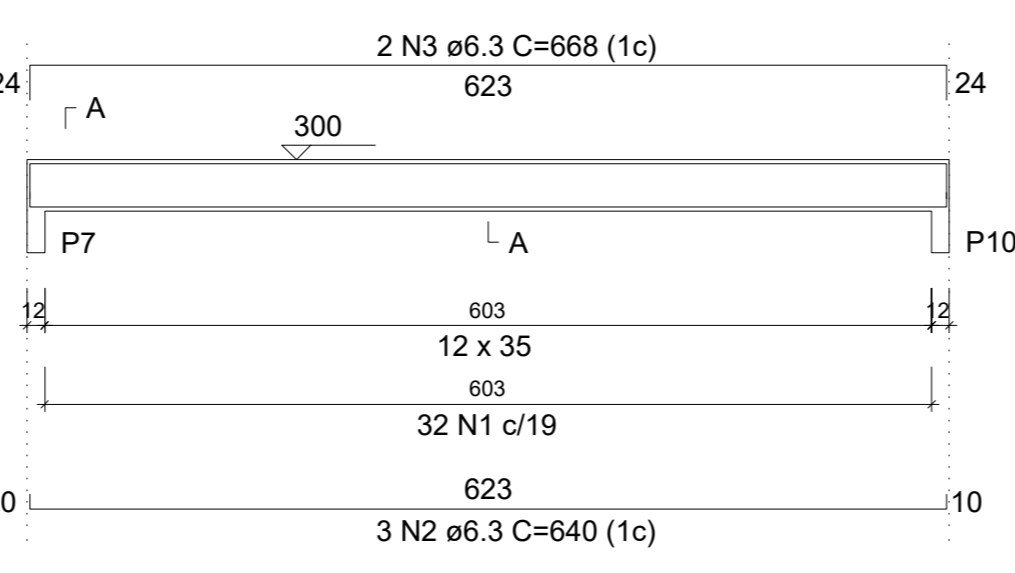
V4 (12 x 35)  
ESC 1:50



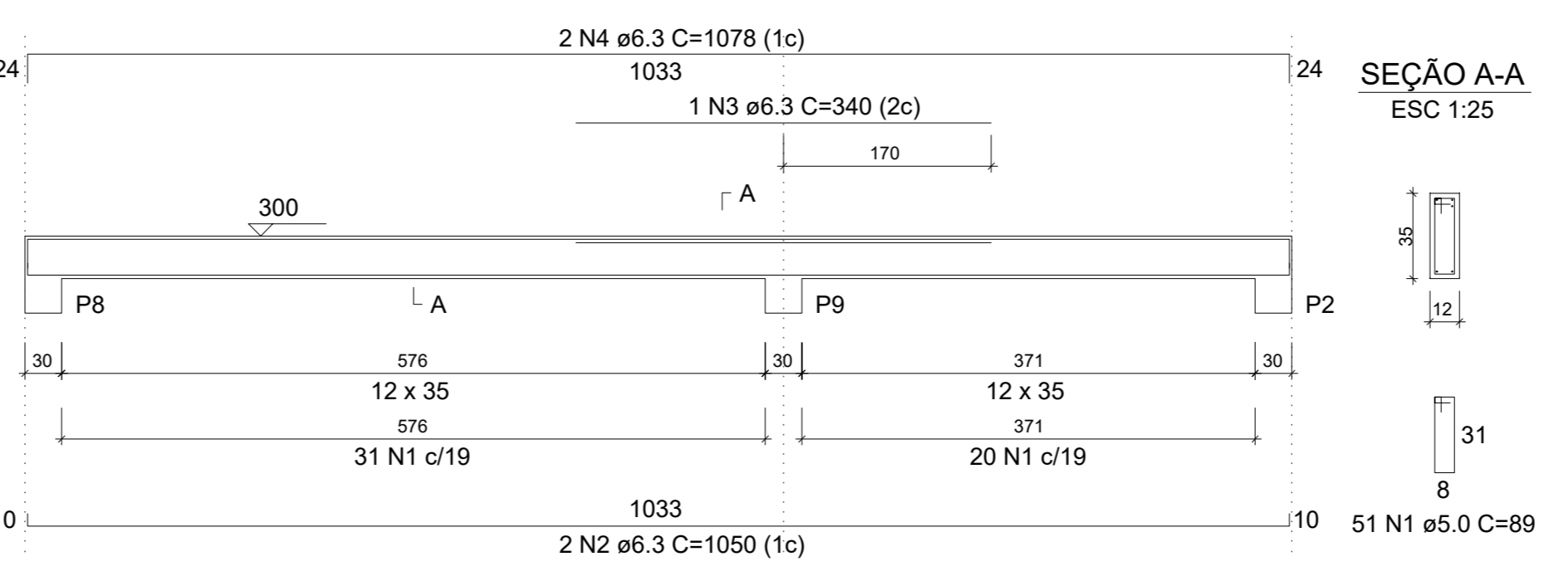
V6 (12 x 35)  
ESC 1:50



V7 (12 x 35)  
ESC 1:50



V8 (12 x 35)  
ESC 1:50



RELAÇÃO DO AÇO

ELEMENTO	AÇO N	DIAM (mm)	QUANT	C. UNIT (cm)	C. TOTAL (cm)	
V1	CA60	1	5,0	56	89	4984
	CA50	2	6,3	2	112	224
	CA50	3	8,0	2	112	228
V2	CA60	1	5,0	54	89	4806
	CA50	2	6,3	2	112	224
	CA50	3	6,3	2	1140	2280
V3	CA60	1	5,0	54	89	4806
	CA50	2	6,3	2	112	224
	CA50	3	6,3	2	1140	2280
V4	CA60	1	5,0	51	89	4539
	CA50	2	6,3	2	1050	2100
	CA50	3	6,3	1	340	340
V5	CA60	1	5,0	32	89	2948
	CA50	2	6,3	2	1078	2156
	CA50	3	6,3	2	668	1336
V6	CA60	1	5,0	21	89	1869
	CA50	2	6,3	2	435	870
	CA50	3	6,3	2	463	926
V7	CA60	1	5,0	32	89	2848
	CA50	2	6,3	3	640	1920
	CA50	3	6,3	2	668	1336
V8	CA60	1	5,0	51	89	4539
	CA50	2	6,3	2	1050	2100
	CA50	3	6,3	1	340	340
	CA50	4	6,3	2	1078	2156

RESUMO DO AÇO

AÇO	DIAM (mm)	C.TOTAL (m)	QUANT + 0% (Barras)	PESO + 0% (kg)
CA50	6,3	287,3	24	70,3
CA60	8,0	22,6	2	8,9
CA50	5,0	312,4	-	48,2
PESO TOTAL (kg)				
CA50				79,2
CA60				48,2

Volume de concreto (C-25) = 2,96 m³  
Área de forma = 57,79 m²

MINISTÉRIO DA EDUCAÇÃO	ANO	TÍTULO	FOLHA	SECRETARIA MUNICIPAL DE EDUCAÇÃO
PCN	2024	EST. 14		
PROPRIEDADE: CALHÁ-NORTE	LOCAL	Município: RR		
CONHECIMENTO: PREFEITURA MUNICIPAL DE MUCAMÁI	OBJETO	CAMPO DE FUTEBOL		
PROFESSOR: Eng. Alexandre Rodrigues Melo	PROFESSOR: Eng. Alexandre Rodrigues Melo	PROFESSOR: Eng. Alexandre Rodrigues Melo	PROFESSOR: Eng. Alexandre Rodrigues Melo	PROFESSOR: Eng. Alexandre Rodrigues Melo
PROFESSOR: Eng. Alexandre Rodrigues Melo	PROFESSOR: Eng. Alexandre Rodrigues Melo	PROFESSOR: Eng. Alexandre Rodrigues Melo	PROFESSOR: Eng. Alexandre Rodrigues Melo	PROFESSOR: Eng. Alexandre Rodrigues Melo