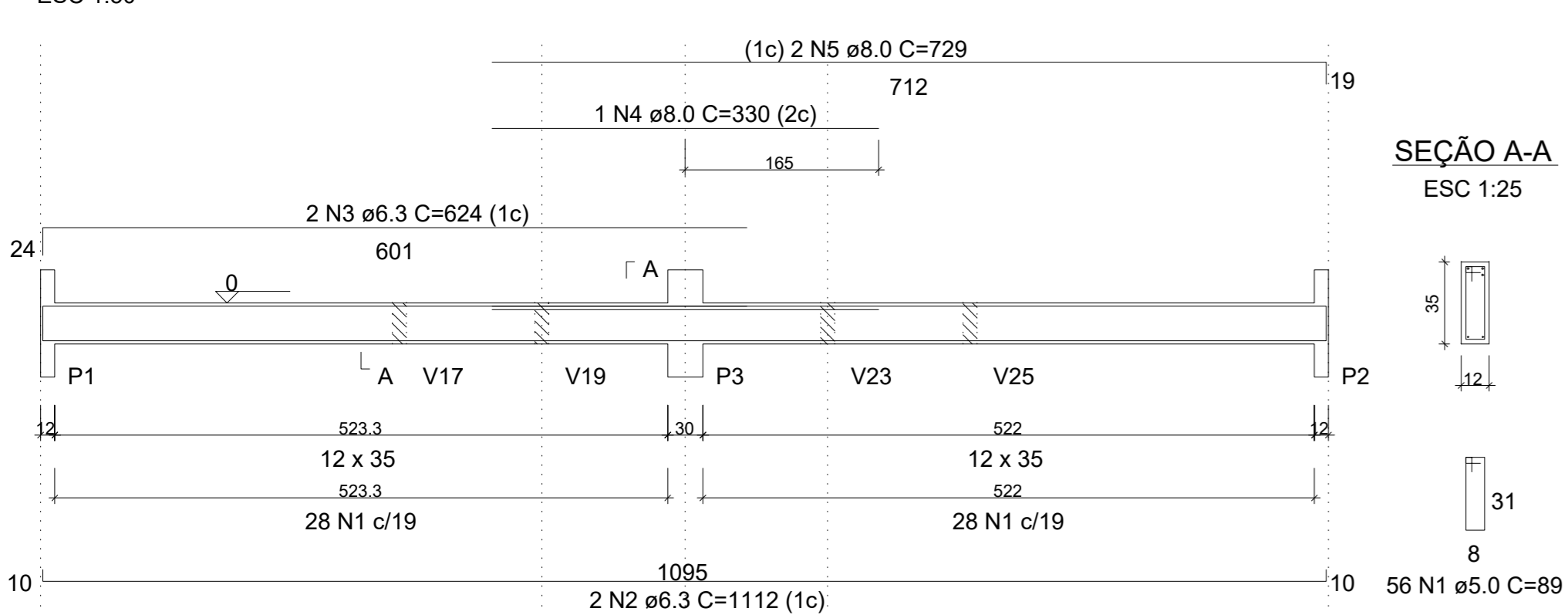
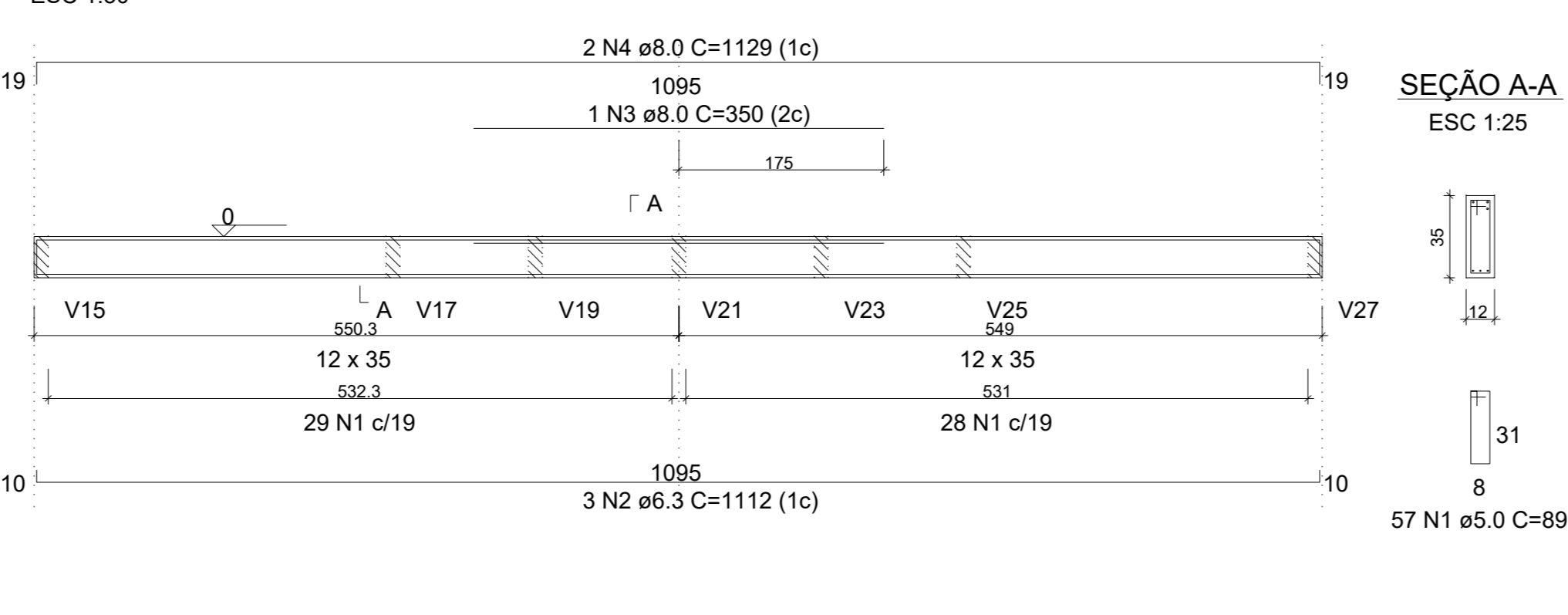


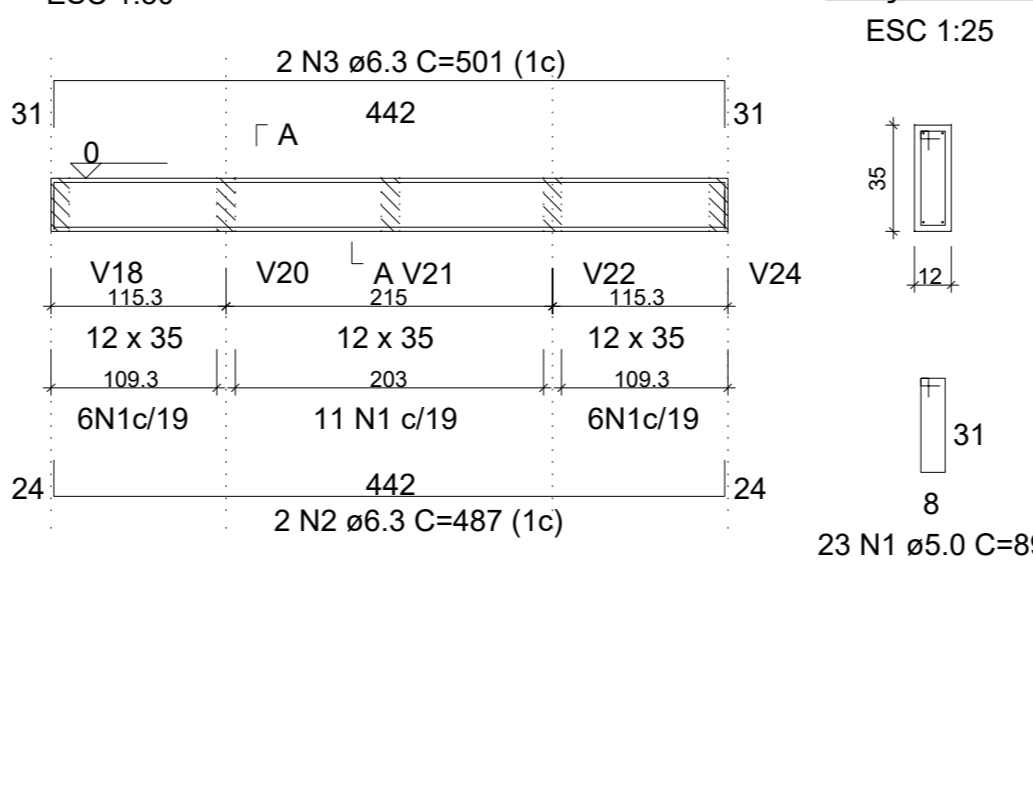
V1 (12 x 35)



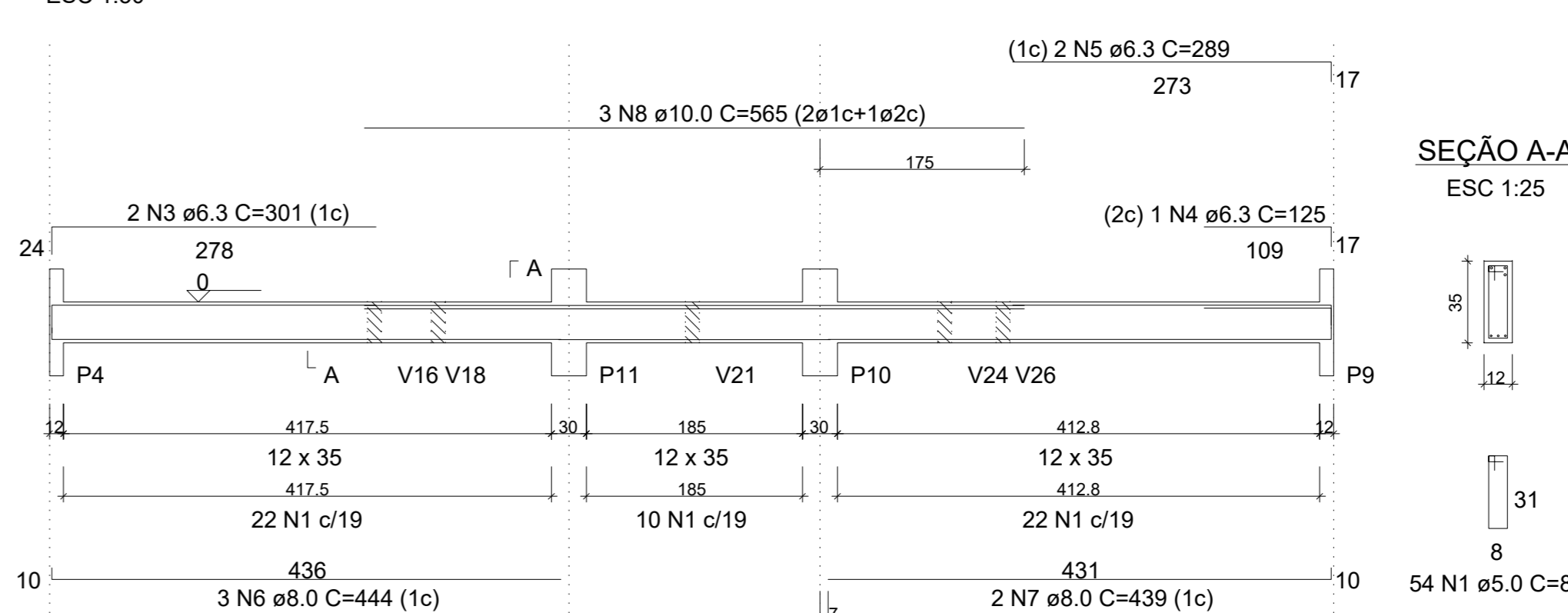
V2 (12 x 35)



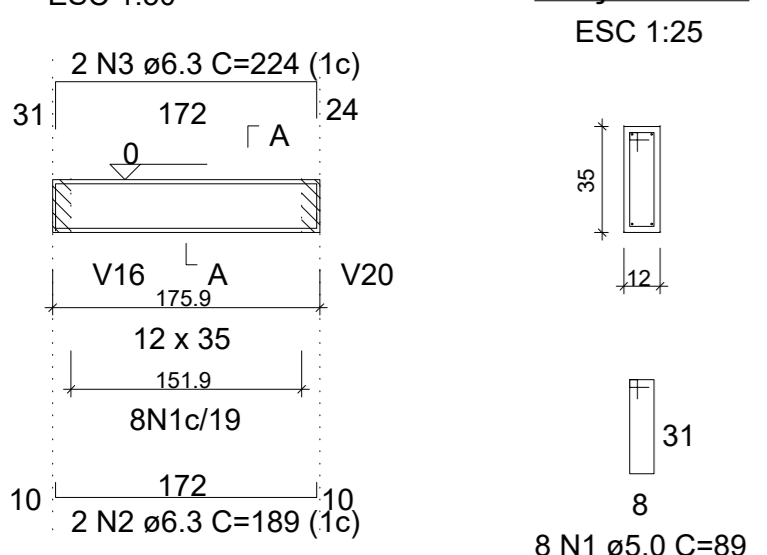
V3 (12 x 35)



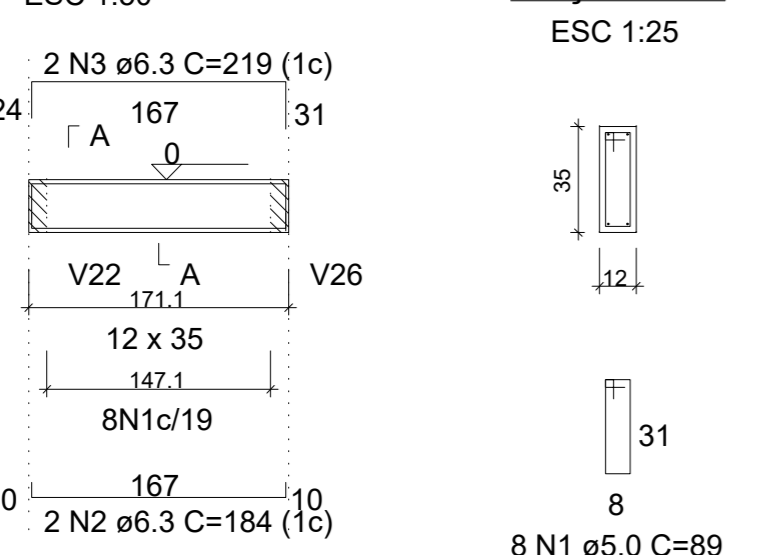
V4 (12 x 35)



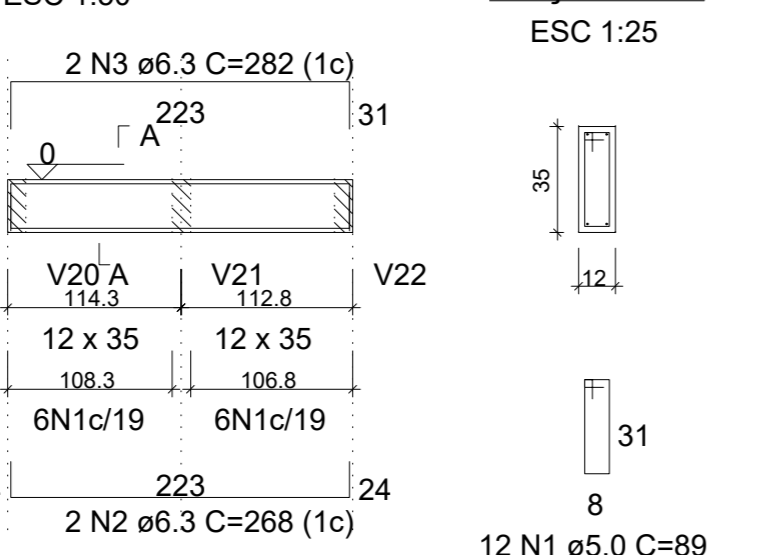
V5 (12 x 35)



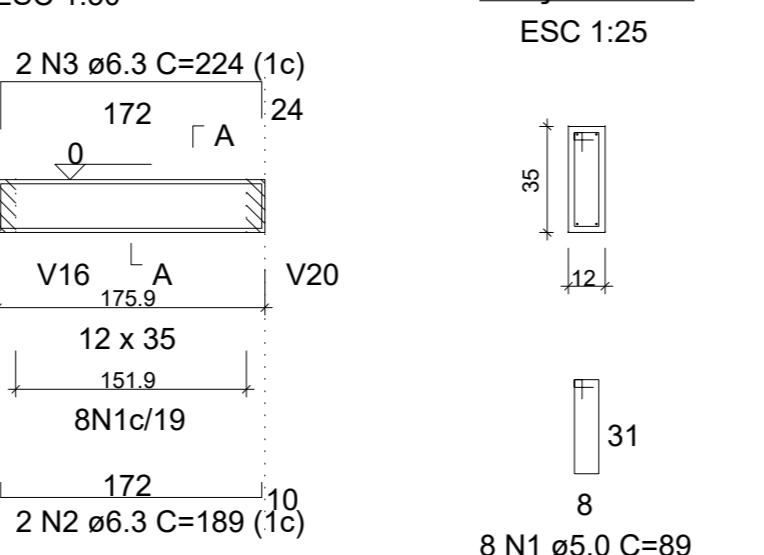
V6 (12 x 35)



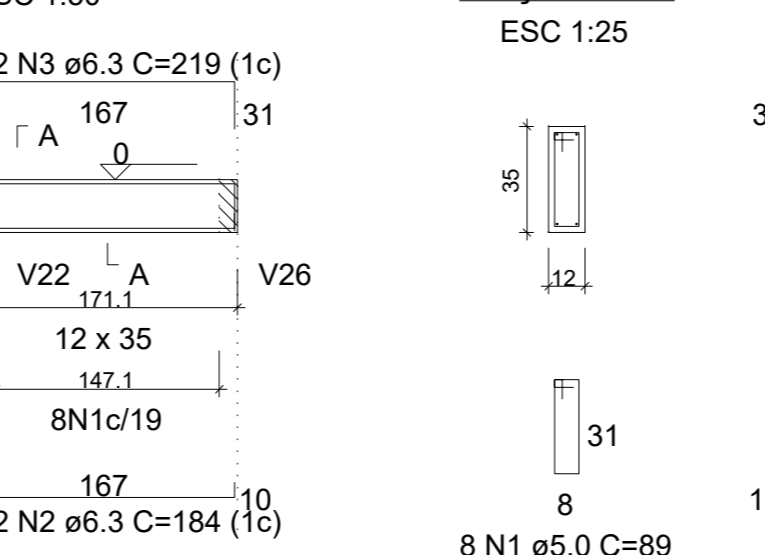
V7 (12 x 35)



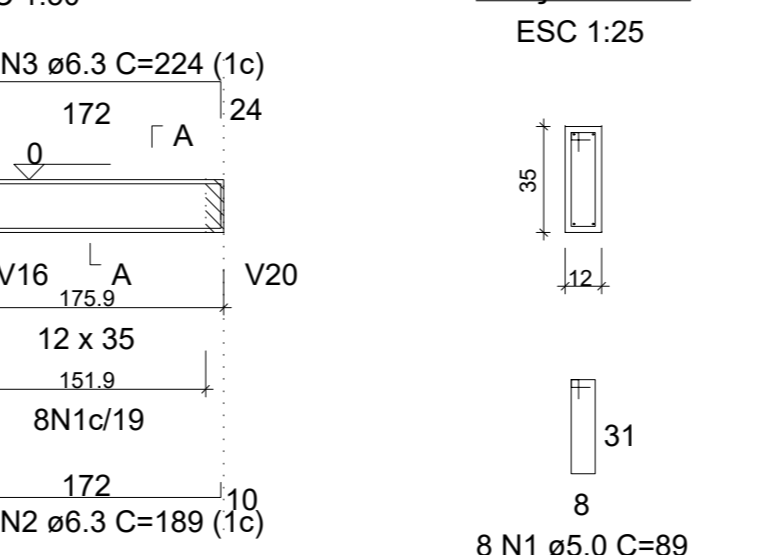
V8 (12 x 35)



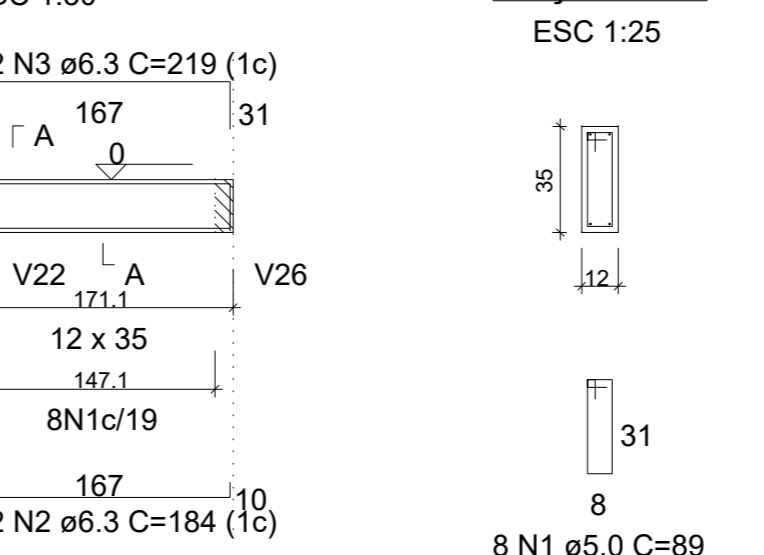
V9 (12 x 35)



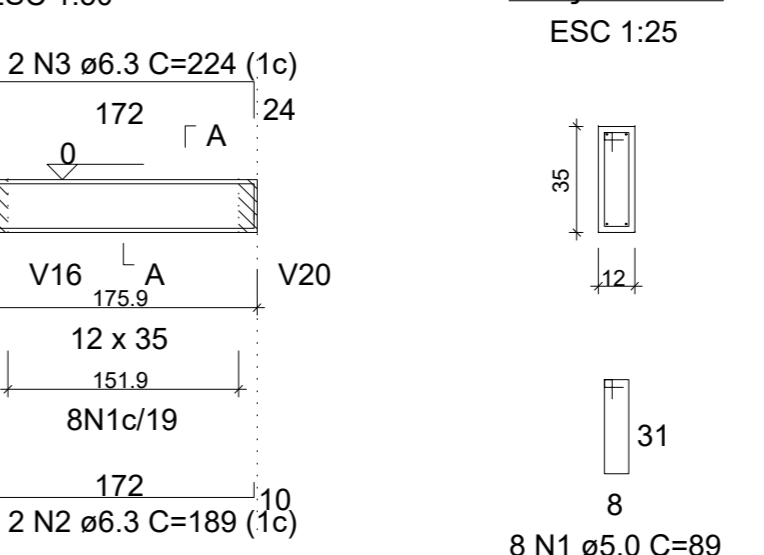
V10 (12 x 35)



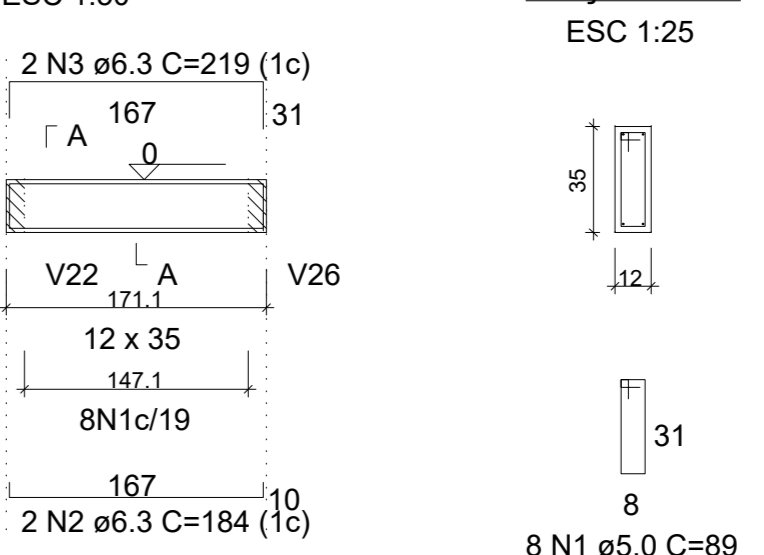
V11 (12 x 35)



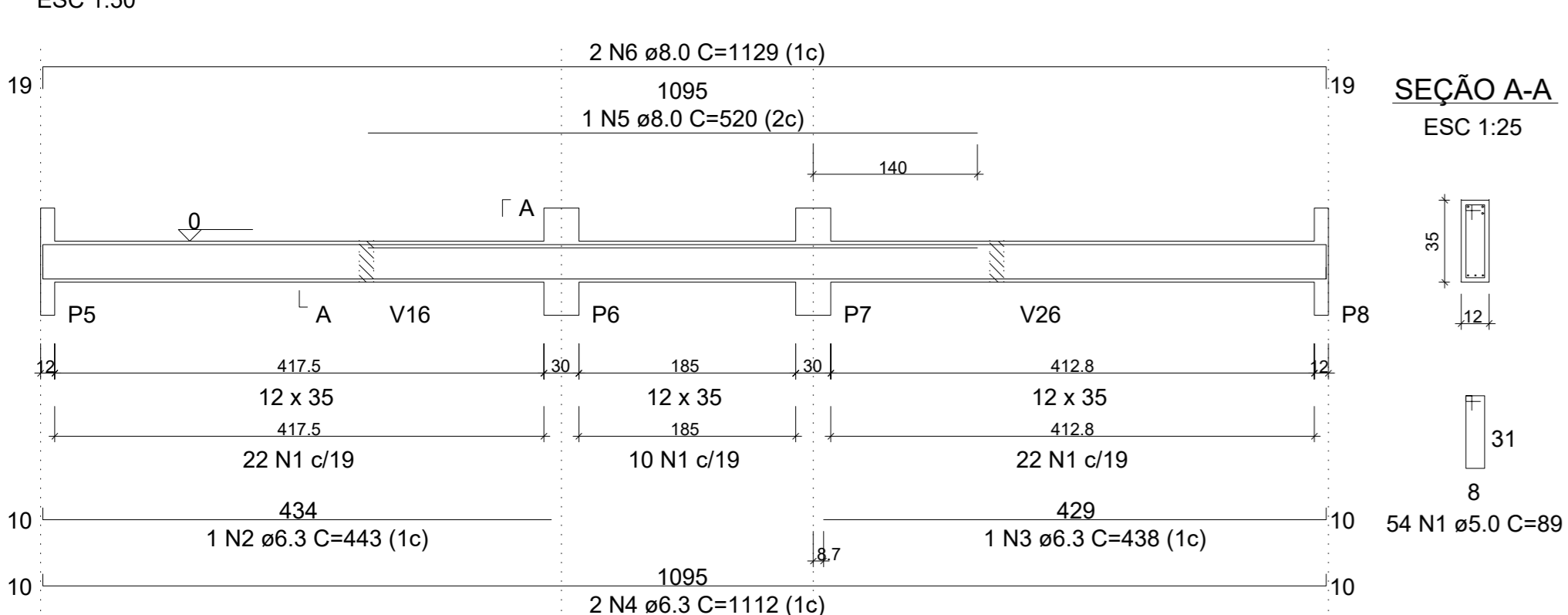
V12 (12 x 35)



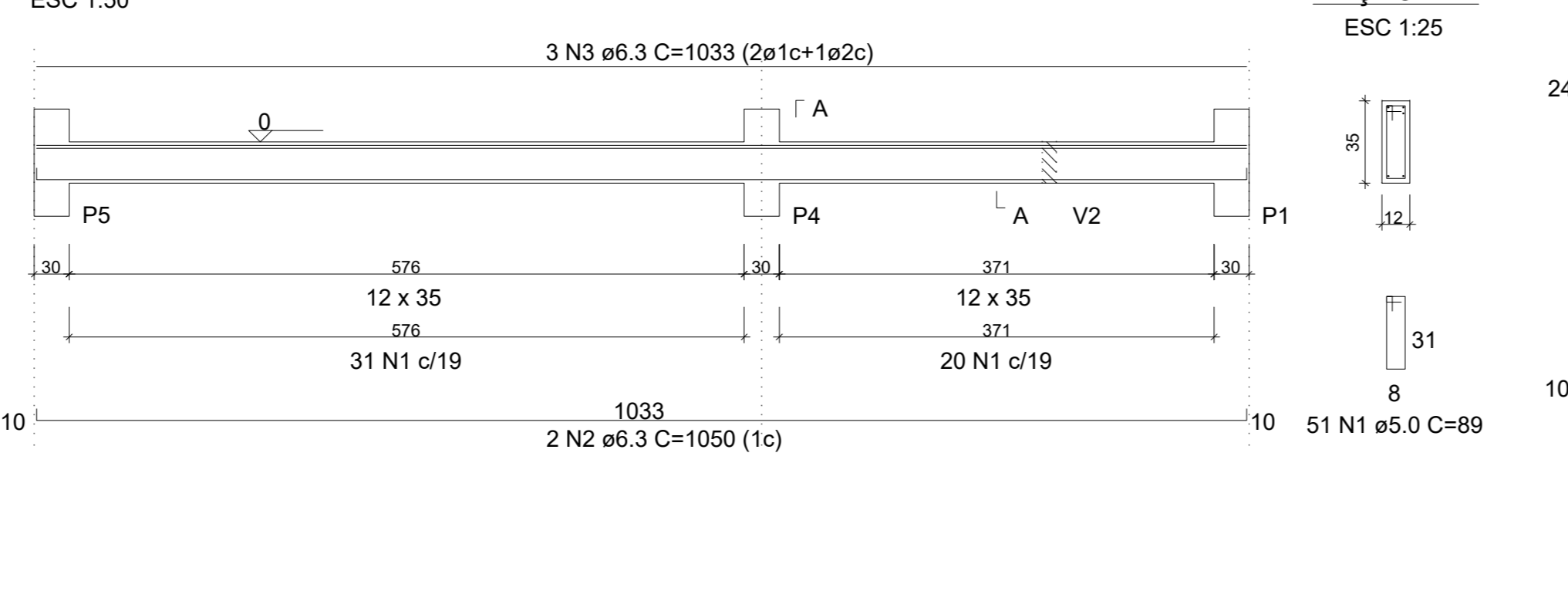
V13 (12 x 35)



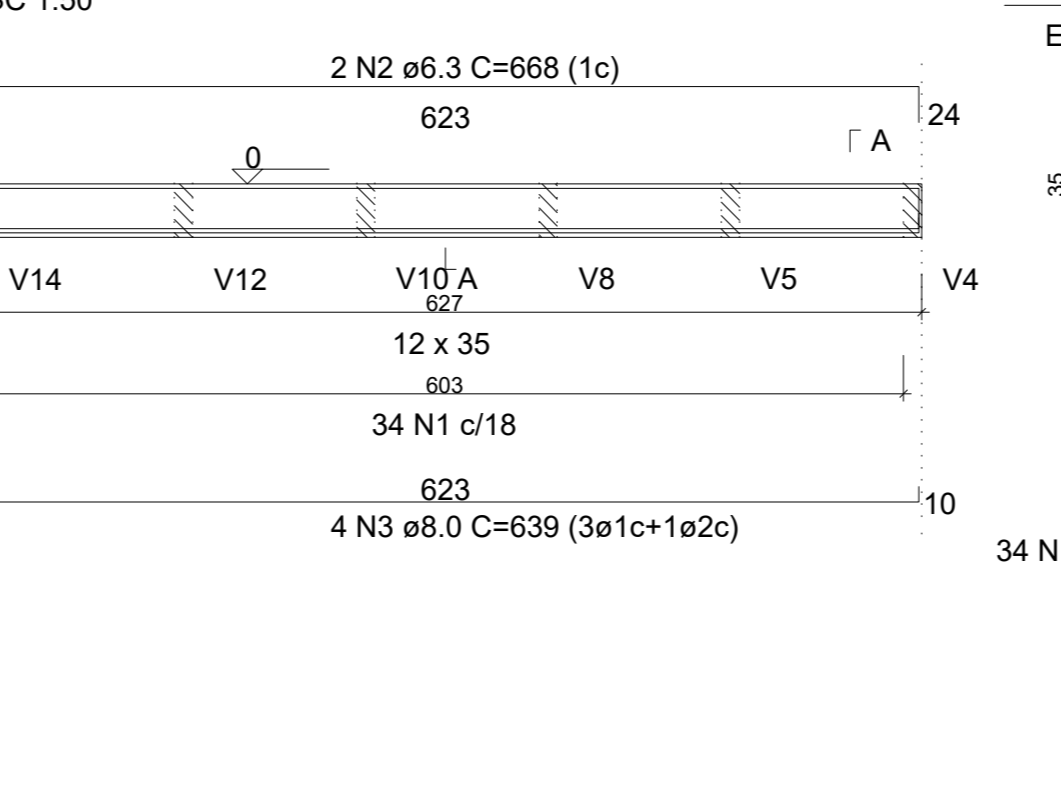
V14 (12 x 35)



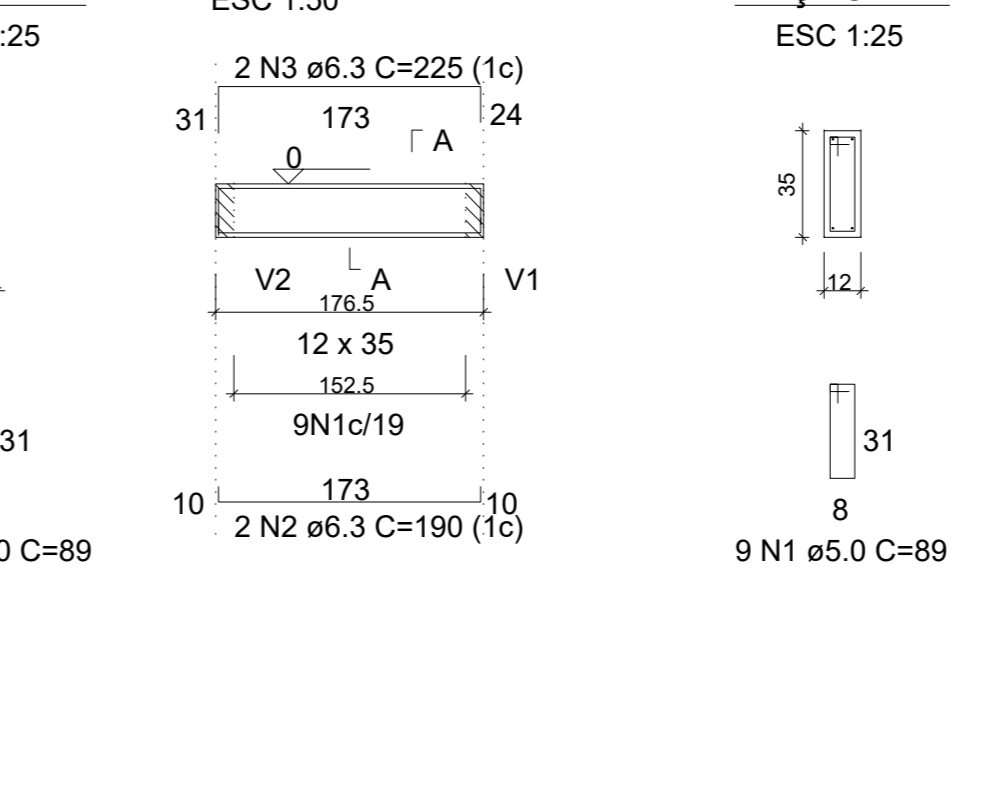
V15 (12 x 35)



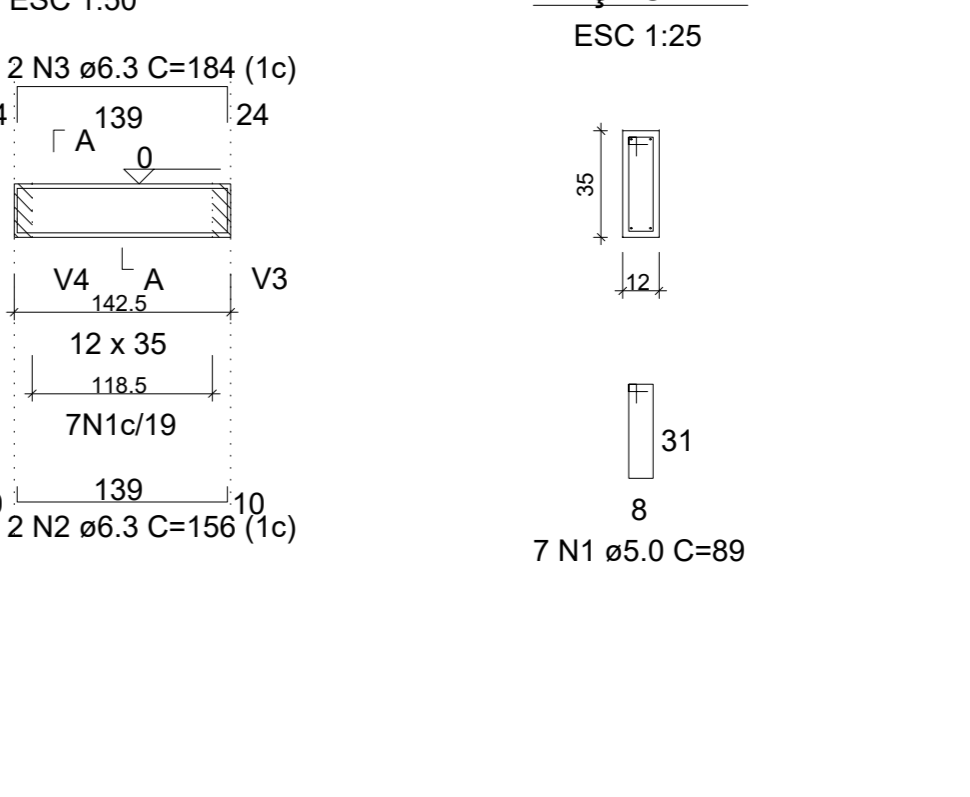
V16 (12 x 35)



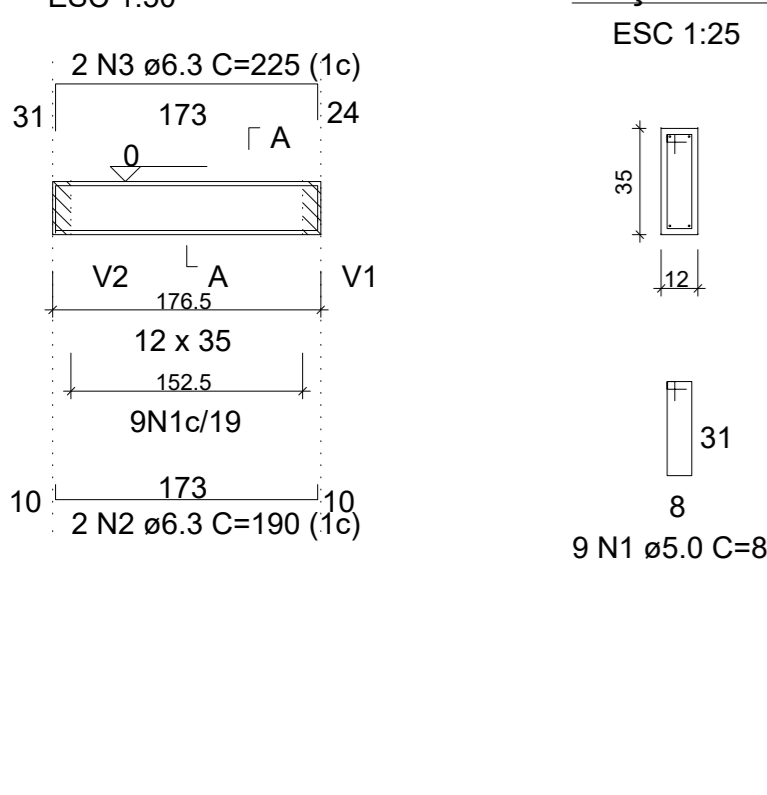
V17 (12 x 35)



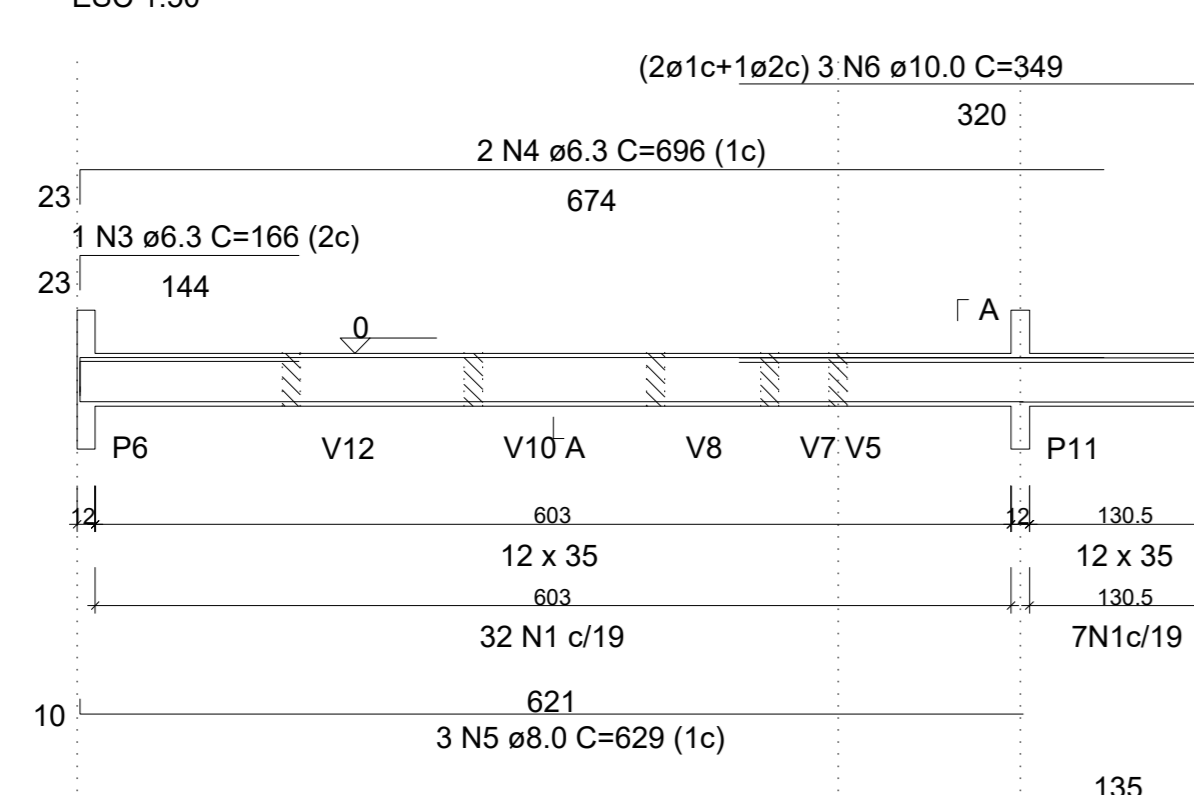
V18 (12 x 35)



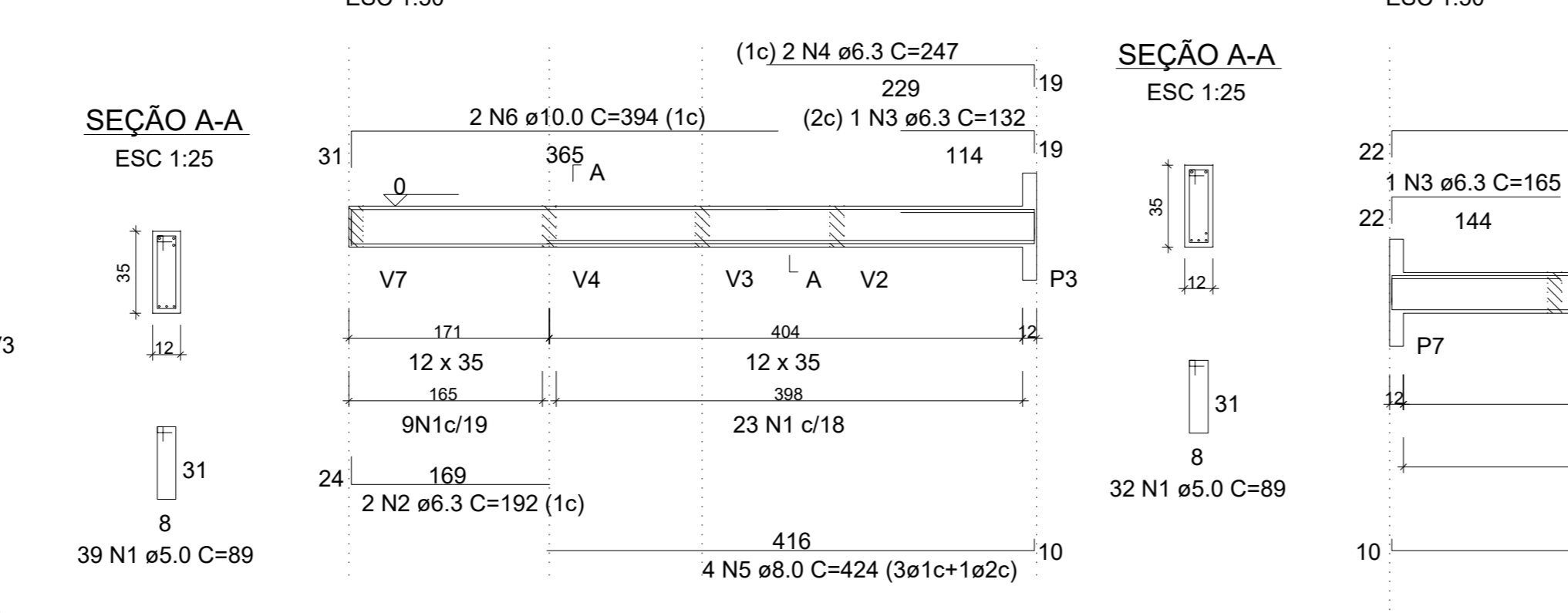
V19 (12 x 35)



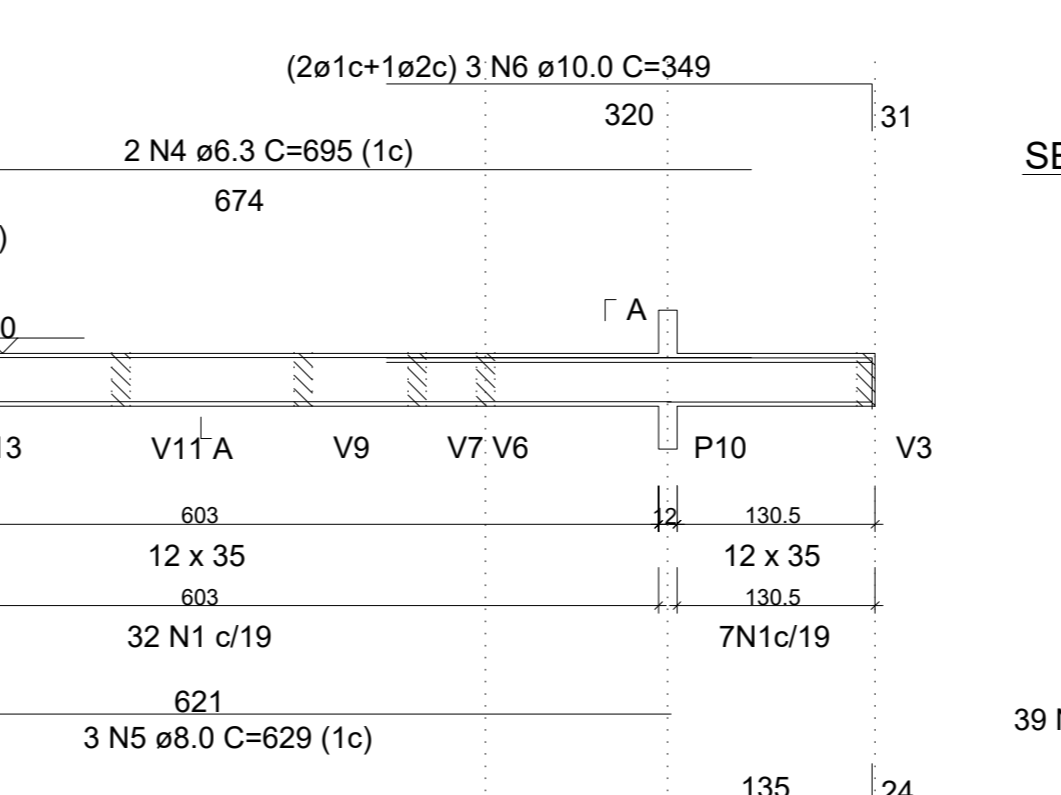
V20 (12 x 35)



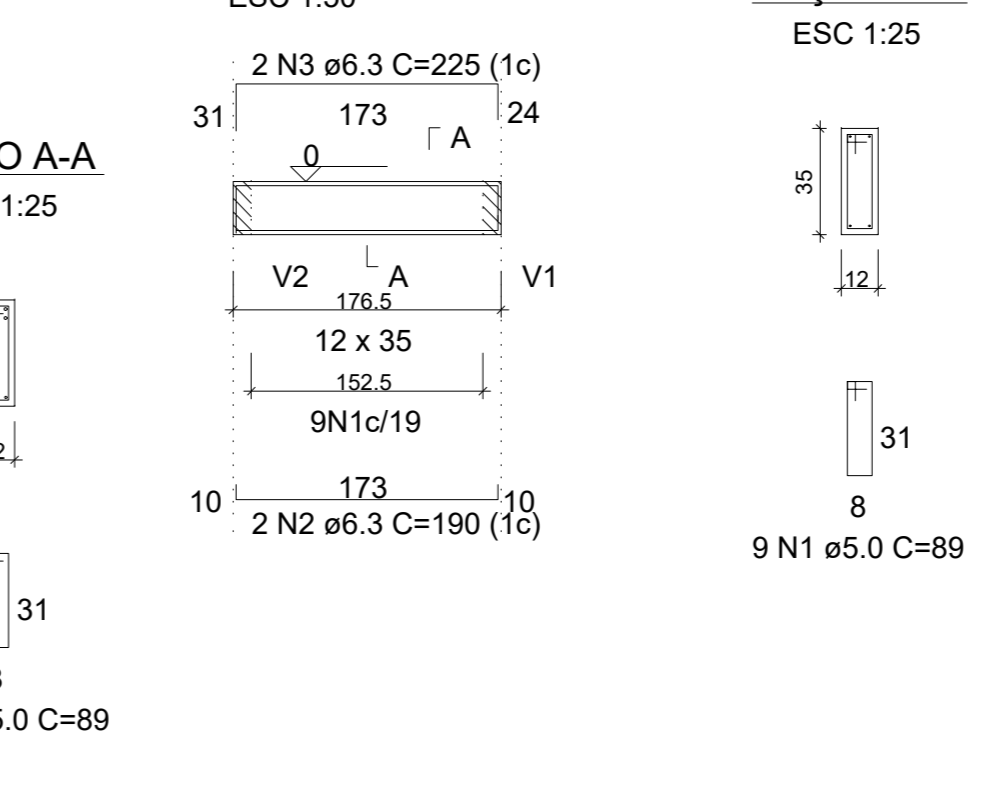
V21 (12 x 35)



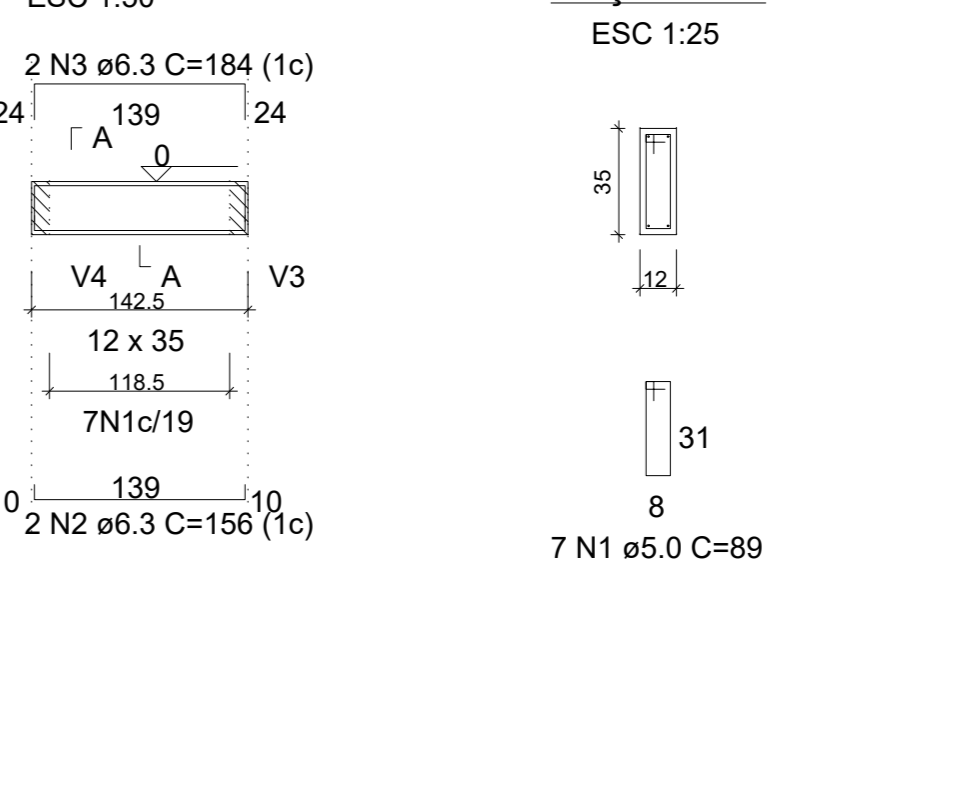
V22 (12 x 35)



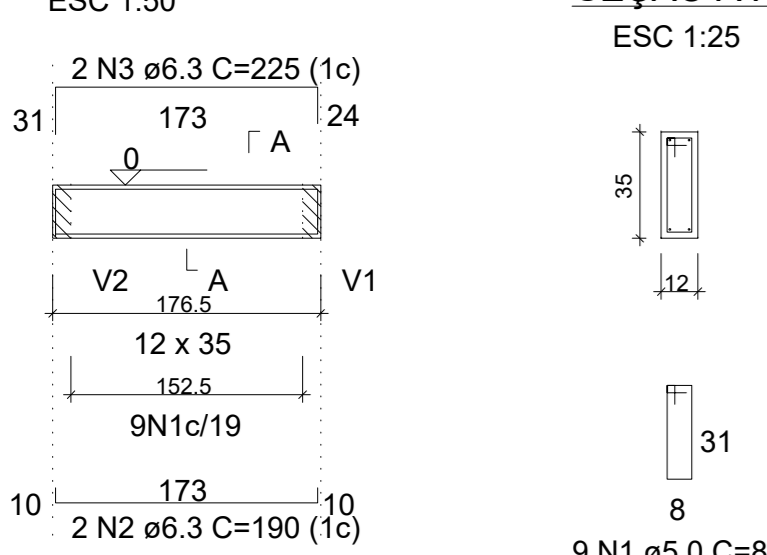
V23 (12 x 35)



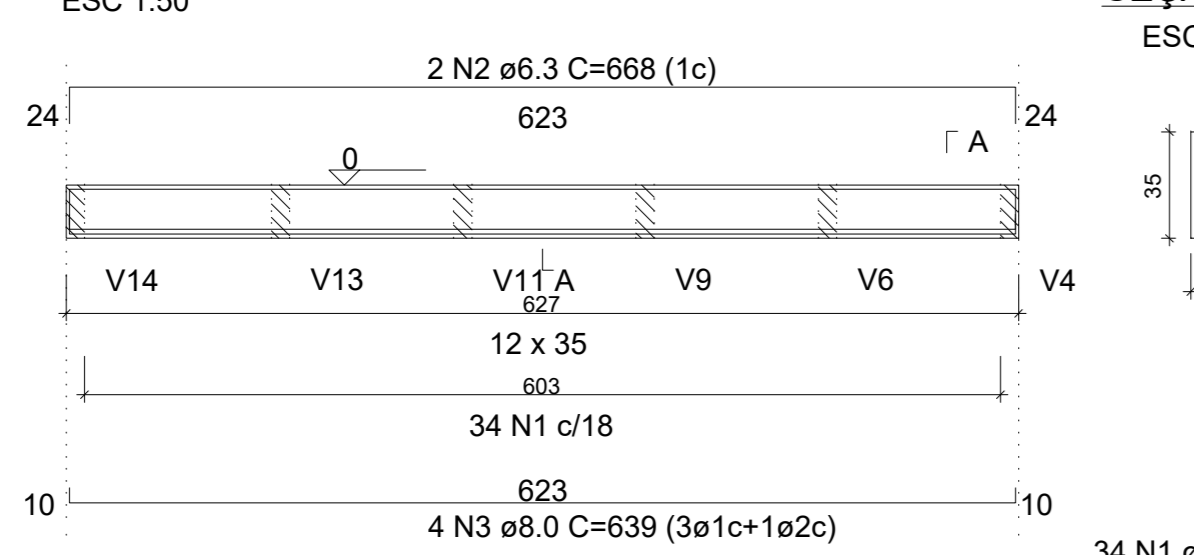
V24 (12 x 35)



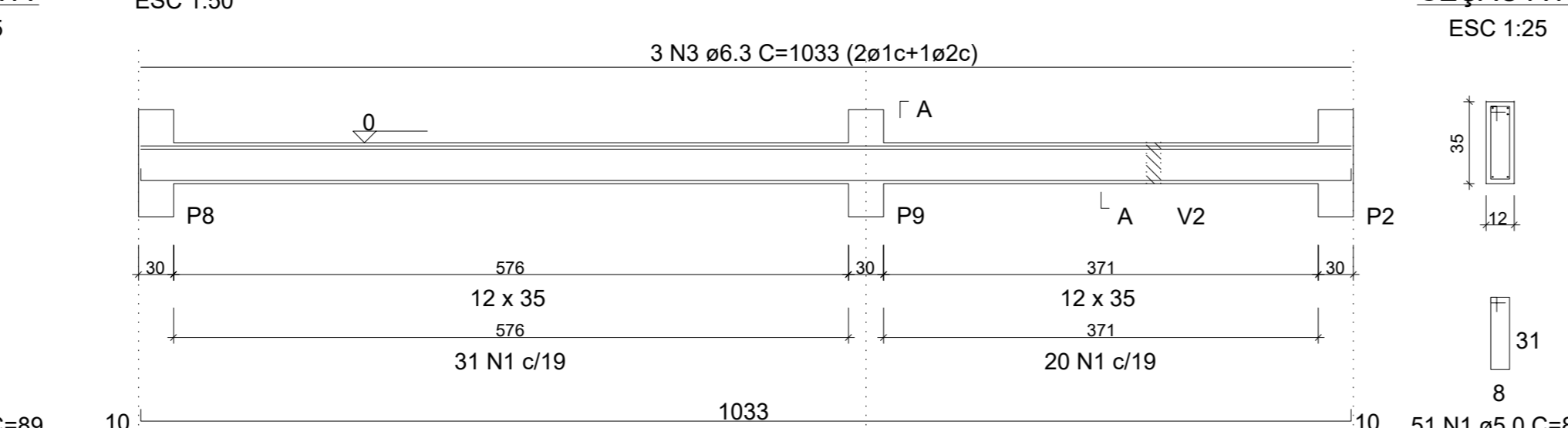
V25 (12 x 35)



V26 (12 x 35)



V27 (12 x 35)



RELAÇÃO DO AÇO

ELEMENTO	AÇO N	DIAM (mm)	QUANT	C	UNIT	C.TOTAL (cm)	TOTAL (cm)
V1	CA50	6.3	56	89		4984	
	CA50	8.0	2	1112		2224	
	CA50	10.0	2	524		1048	
V2	CA50	6.3	3	330		330	
	CA50	8.0	2	729		1458	
	CA50	10.0	2	57		89	
V3	CA50	6.3	3	1112		3336	
	CA50	8.0	1	350		350	
	CA50	10.0	2	1129		2258	
V4	CA50	6.3	23	89		2047	
	CA50	8.0	2	487		974	
	CA50	10.0	2	501		1002	
V5	CA50	6.3	2	289		578	
	CA50	8.0	3	444		1332	
	CA50	10.0	3	565		1695	
V6	CA50	6.3	2	189		378	
	CA50	8.0	2	224		448	
	CA50	10.0	8	89		712	
V7	CA50	6.3	2	219		438	
	CA50	8.0	12	89		1068	
	CA50	10.0	2	268		536	
V8	CA50	6.3	2	282		564	
	CA50	8.0	8	89		712	
	CA50	10.0	2	189		378	
V9	CA50	6.3	2	224		448	
	CA50	8.0	8	89		712	
	CA50	10.0	2	184		368	
V10	CA50	6.3	2	219		438	
	CA50	8.0	2	89		178	
	CA50	10.0	2	189		378	
V11	CA50	6.3	2	224		448	
	CA50	8.0	2	89		178	
	CA50	10.0	2	184		368	
V12	CA50	6.3	2	219		438	
	CA50	8.0	2	89		178	
	CA50	10.0	2	189		378	
V13	CA50	6.3	2	224		448	
	CA50	8.0	8	89		712	
	CA50	10.0	2	184		368	
V14	CA50	6.3	2	219		438	
	CA50	8.0	54	89		4806	
	CA50	10.0	1	443		443	
V15	CA50	6.3	1	438		438	
	CA50	8.0	2	1112		2224	
	CA50	10.0	1	520		520	
V16	CA50	6.3	2	1129		2258	
	CA50	8.0	51	89		4539	
	CA50	10.0	2	1050		2100	
V17	CA50	6.3	3	1033		3099	
	CA50	8.0	34	89		3026	
	CA50	10.0	2	668		1336	
V18	CA50	6.3	4	639		2556	
	CA50	8.0	7	89		623	
	CA50	10.0	2	156		312	
V19	CA50	6.3	2	184		368	
	CA50	8.0	9	89		801	
	CA50	10.0	2	190		380	
V20	CA50	6.3	2	225		450	
	CA50	8.0	39	89		3471	
	CA50	10.0	2	158		316	
V21	CA50	6.3	1	166		166	
	CA50	8.0	2	696		1392	
	CA50	10.0	3	629		1887	
V22	CA50	6.3	3	349		1047	
	CA50	8.0	32	89		2848	
	CA50	10.0	2	192		384	
V23	CA50	6.3	1	132		132	
	CA50	8.0	4	247		494	
	CA50	10.0	4	424		1696	
V24	CA50	6.3	2	394		788	
	CA50	8.0	39	89		3471	
	CA50	10.0	2	158		316	
V25	CA50	6.3	1	165		165	
	CA50	8.0	2	695		1390	
	CA50	10.0	3	629		1887	
V26	CA50	6.3	3	349		1047	
	CA50	8.0	32	89		2848	
	CA50	10.0	2	190		380	
V27	CA50	6.3	2	225		450	
	CA50	8.0	7	89		623	
	CA50	10.0	2	156		312	

RESUMO DO AÇO

AÇO	DIAM (mm)	C.TOTAL (m)	QUANT + 0% (Barras)	PESO + 0% (kg)
CA50	6.3	437.9	37	107.2
CA50	8.0	199.7	17	78.8
CA50	10.0	45.8	4	28.2
CA60	5.0	578.5	-	89.2
<b>PESO TOTAL (kg)</b>				
CA50		214.2		
CA60		89.2		

Volume de concreto (C-25) = 5.41 m³  
 Área de forma = 105.61 m²