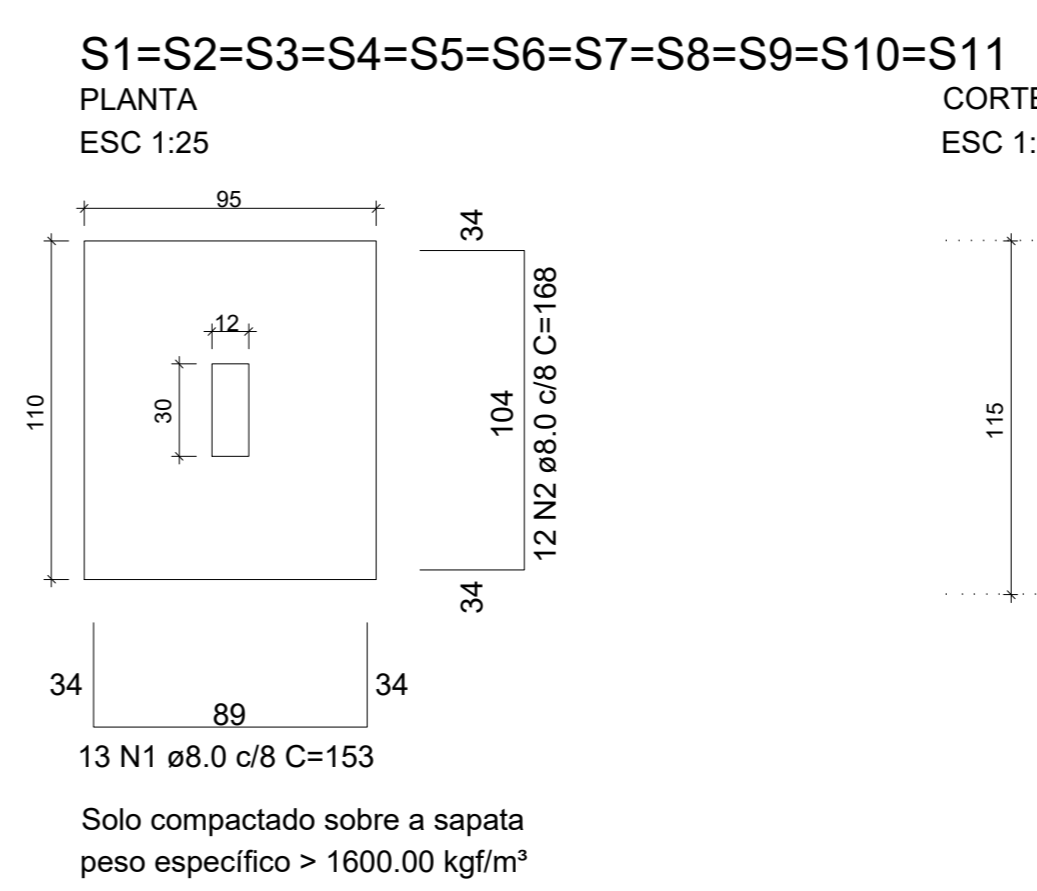
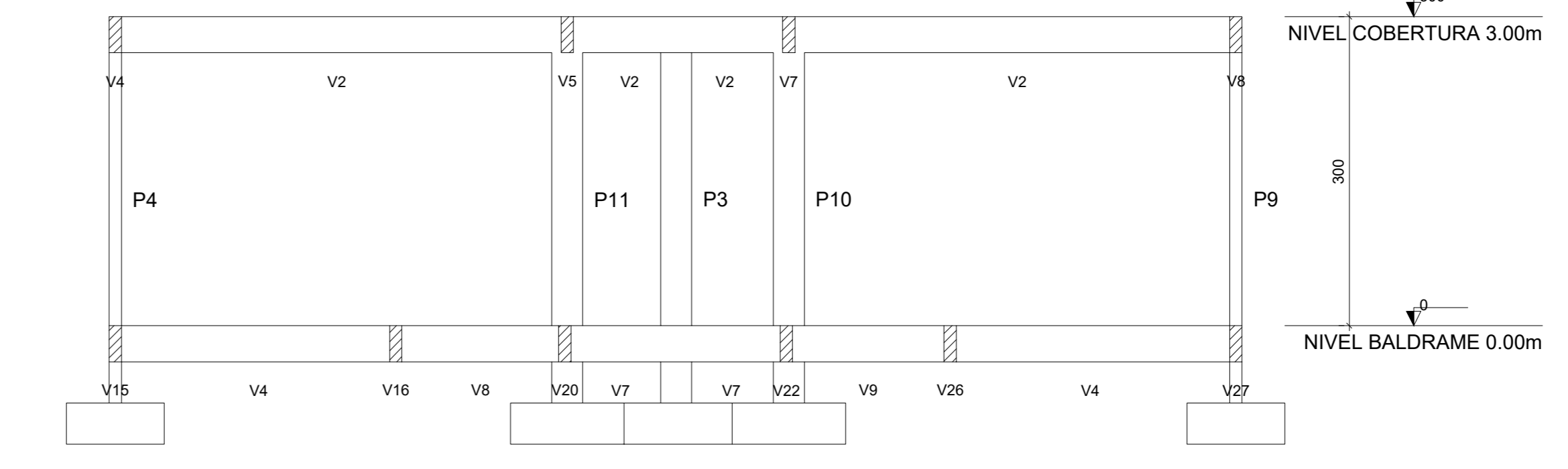
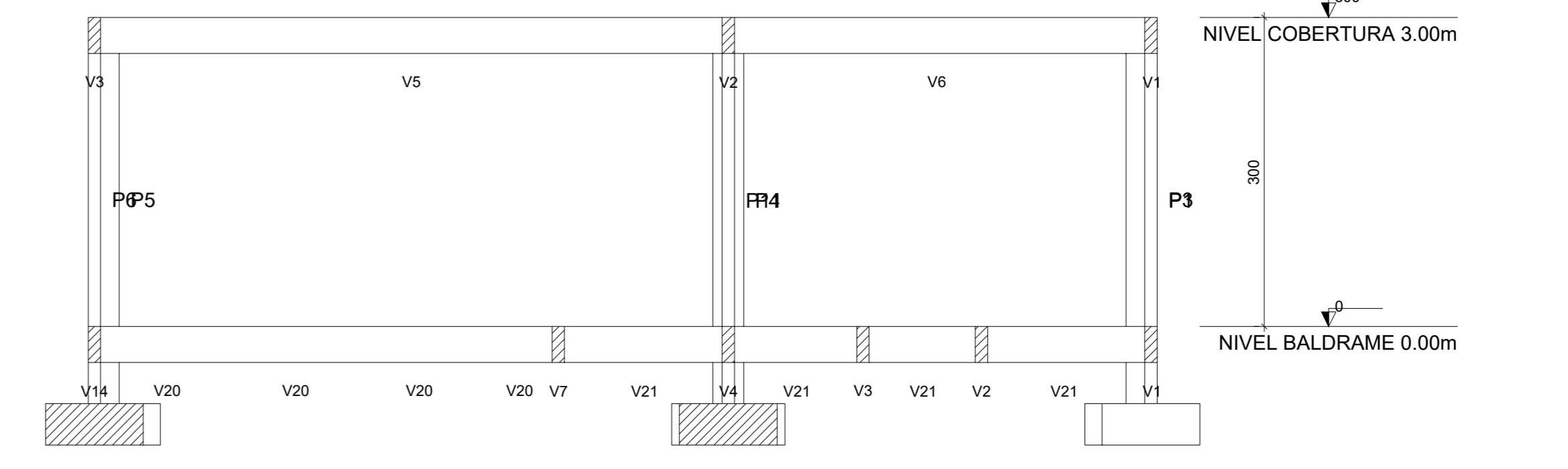


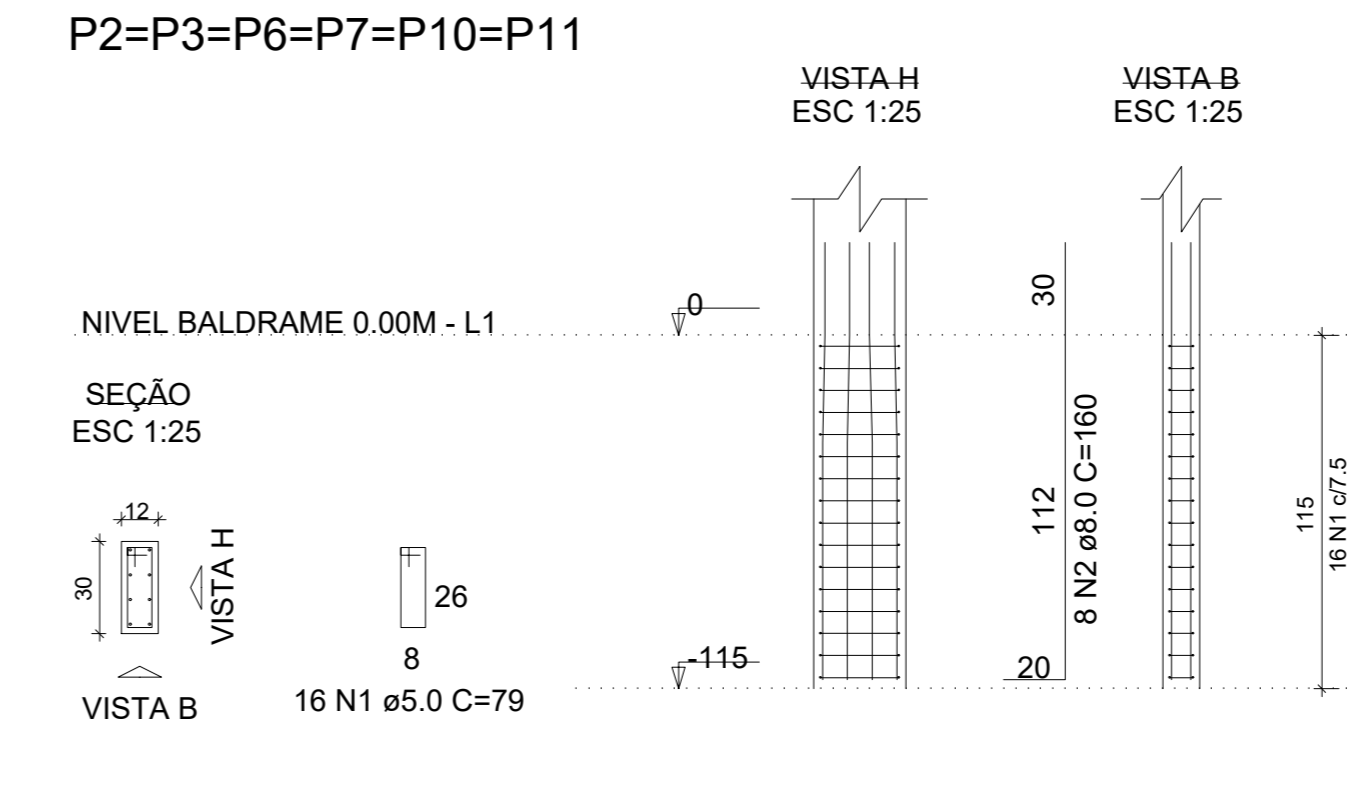
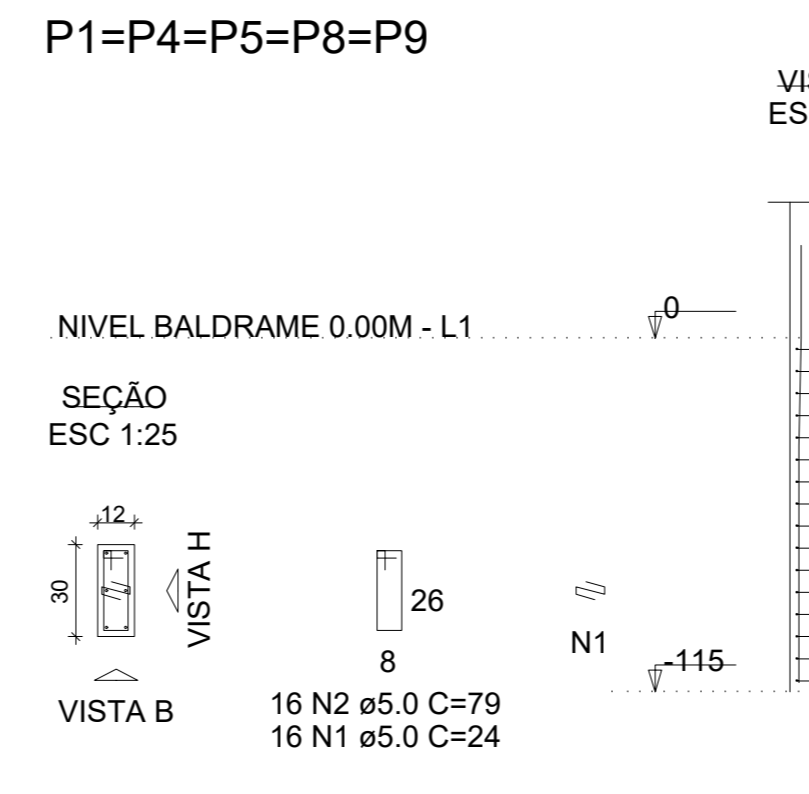
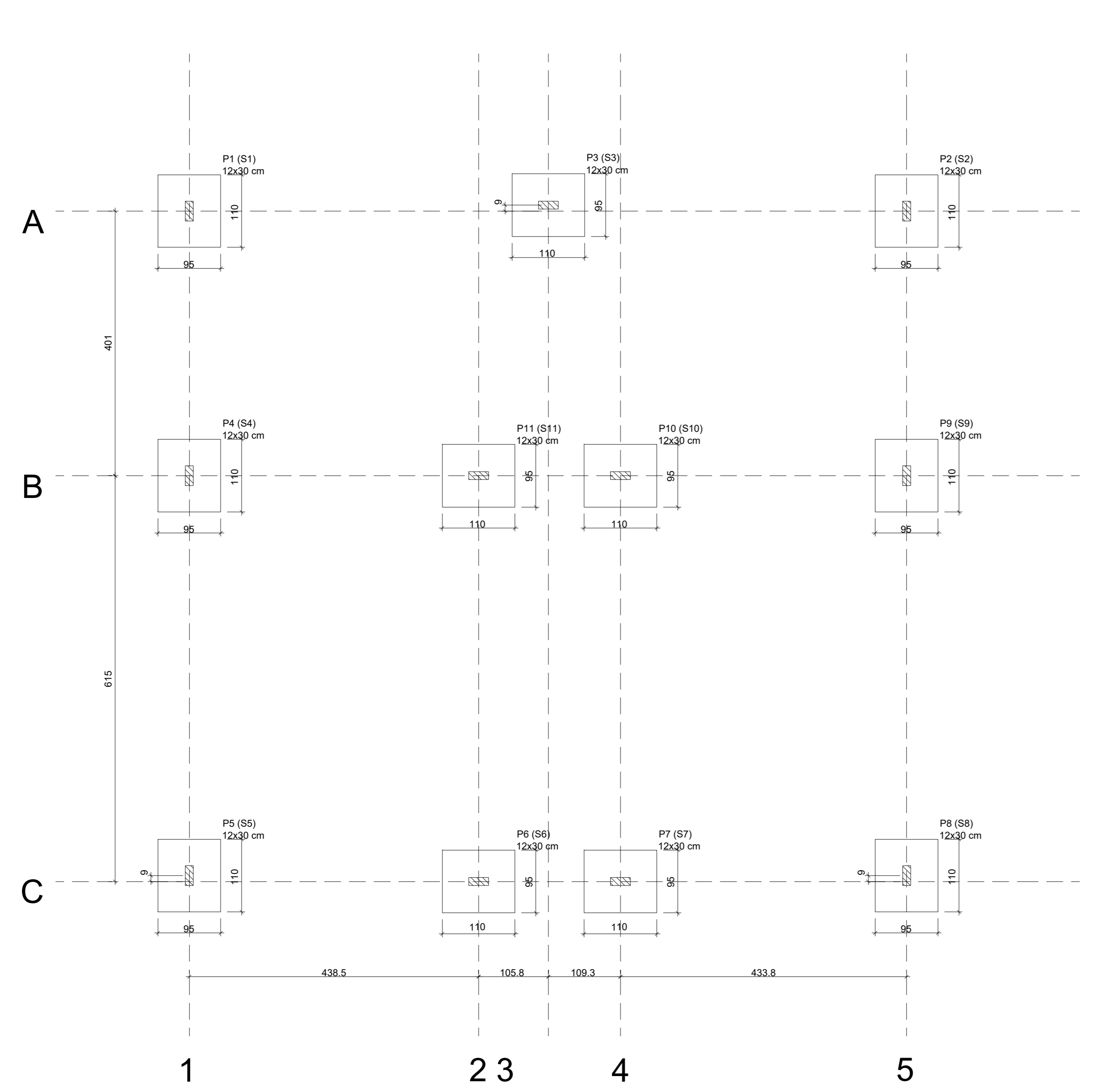
Nome Beção (cm)	Carga Min. (tf)	Lado B (cm)	Lado H (cm)	h0 / h1 (cm)	h1 / hb (cm)	df (cm)
P1	2.8	95	110	40	40	115
P2	2.8	95	110	40	40	115
P3	8.4	95	110	40	40	115
P4	4.6	95	110	40	40	115
P5	3.1	95	110	40	40	115
P6	4.7	95	110	40	40	115
P7	4.6	95	110	40	40	115
P8	3.0	95	110	40	40	115
P9	4.5	95	110	40	40	115
P10	8.0	95	110	40	40	115
P11	8.1	95	110	40	40	115



ELEMENTO	AÇO N	DIAM (mm)	QUANT	C. TOTAL (m)	UNIT C. TOTAL (cm)	PESO + 0% (kg)
11xS1	CA50	8.0	143	153	21879	22176
	CA50	8.0	132	168	18176	18472

AÇO	DIAM (mm)	C. TOTAL (m)	QUANT + 0% (Barras)	PESO + 0% (kg)
CA50	8.0	440.6	37	173.8
PESO TOTAL (kg)				173.8

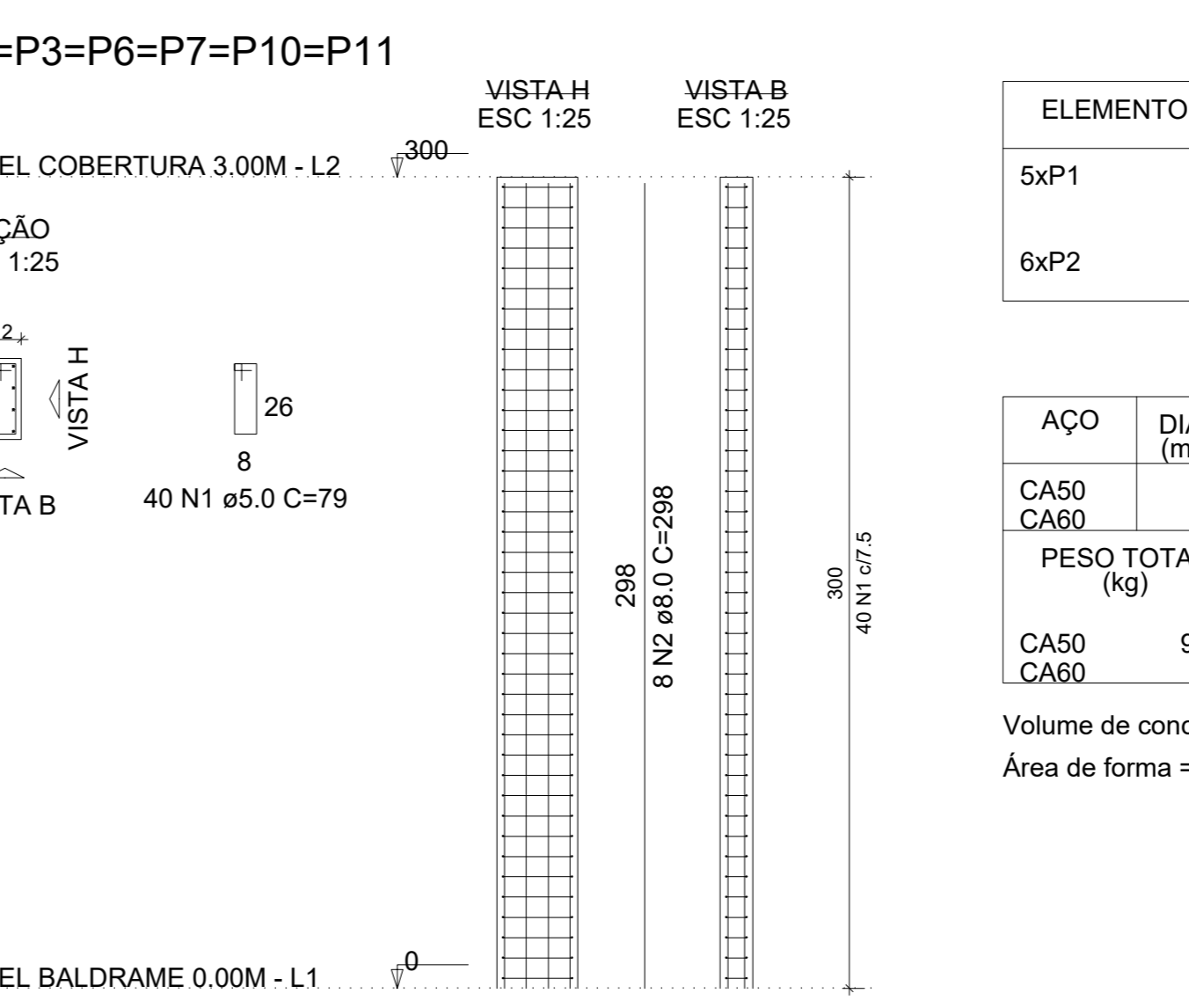
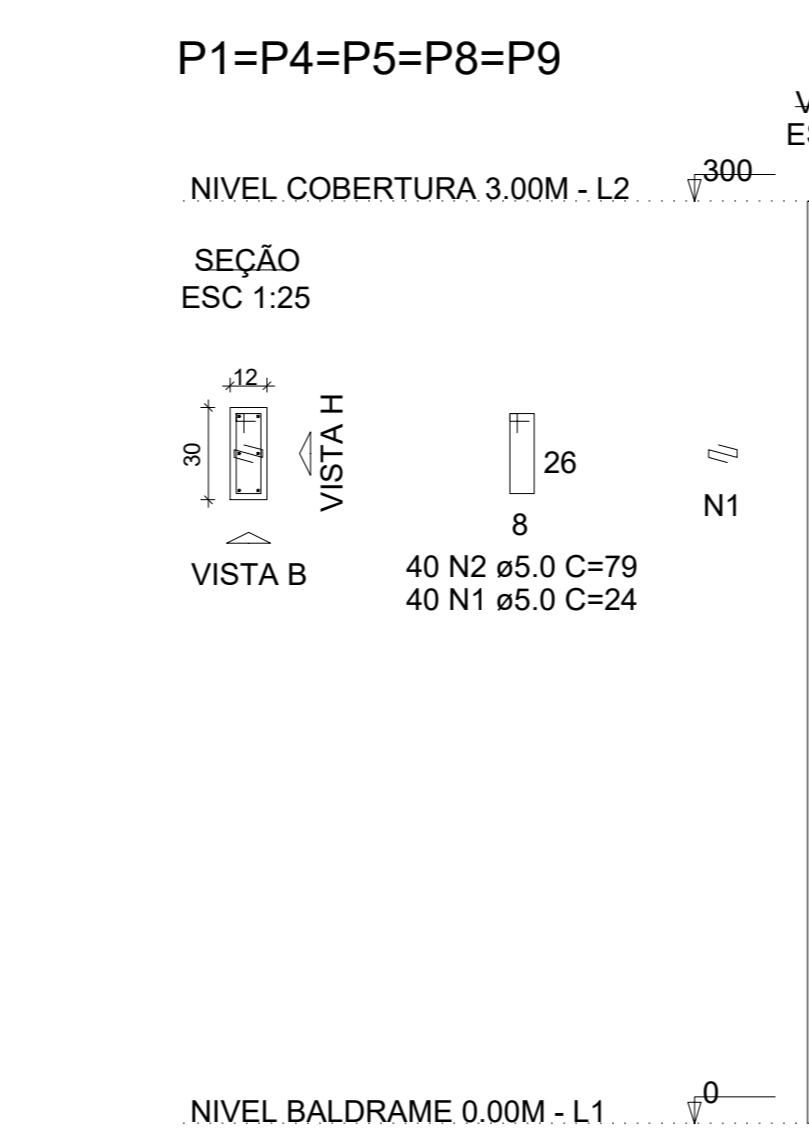
Volume de concreto (C-20) = 4.60 m³
 Área de forma = 18.04 m²



ELEMENTO	AÇO N	DIAM (mm)	QUANT	C. TOTAL (m)	UNIT C. TOTAL (cm)	PESO + 0% (kg)
5xP1	CA60	5.0	80	24	1920	6320
	CA60	5.0	80	79	1980	6320
6xP2	CA50	3.0	30	160	4800	8940
	CA60	1.0	96	79	7584	7584
	CA50	2.0	48	160	4800	7584

AÇO	DIAM (mm)	C. TOTAL (m)	QUANT + 0% (Barras)	PESO + 0% (kg)
CA50	8.0	124.8	11	49.2
CA60	5.0	158.2	-	24.4
PESO TOTAL (kg)				49.2

Volume de concreto (C-25) = 0.46 m³
 Área de forma = 10.63 m²



ELEMENTO	AÇO N	DIAM (mm)	QUANT	C. TOTAL (m)	UNIT C. TOTAL (cm)	PESO + 0% (kg)
5xP1	CA60	1.0	200	24	4800	15800
	CA60	2.0	200	79	19800	15800
6xP2	CA50	3.0	30	298	8940	8940
	CA60	1.0	240	79	18960	18960
	CA50	2.0	48	298	14304	14304

AÇO	DIAM (mm)	C. TOTAL (m)	QUANT + 0% (Barras)	PESO + 0% (kg)
CA50	8.0	232.4	20	91.7
CA60	5.0	395.6	-	61
PESO TOTAL (kg)				91.7

Volume de concreto (C-25) = 1.19 m³
 Área de forma = 27.72 m²

Nome Beção (cm)	Carga Min. (tf)	Lado B (cm)	Lado H (cm)	h0 / h1 (cm)	h1 / hb (cm)	df (cm)
P1	2.8	95	110	40	40	115
P2	2.8	95	110	40	40	115
P3	8.4	95	110	40	40	115
P4	4.6	95	110	40	40	115
P5	3.1	95	110	40	40	115
P6	4.7	95	110	40	40	115
P7	4.6	95	110	40	40	115
P8	3.0	95	110	40	40	115
P9	4.5	95	110	40	40	115
P10	8.0	95	110	40	40	115
P11	8.1	95	110	40	40	115

